



## **Request for Proposal (RFP)**

---

### **Civil works relating to construction of** **Display-cum-demonstration centre at** **Malliakarai, Salem**

**Tender Ref.: TNHDC/241/DC/22-23**

## **Tender Document (Envelope-A)**

---

**The Tamil Nadu Handicrafts Development Corporation Ltd (TNHDC)**

759 Anna Salai, Chennai – 600 002

Phone:(044) 2852 1271/1325/5094

Fax: (044) 2852 4231

Email: [tamilnaduhandicrafts@yahoo.co.in](mailto:tamilnaduhandicrafts@yahoo.co.in)

## Table of Contents

<b>1. Introduction .....</b>	<b>7</b>
<b>2. Tender Schedule .....</b>	<b>8</b>
<b>3. Tender Eligibility Criteria .....</b>	<b>9</b>
<b>4. Instructions to the Bidders .....</b>	<b>10</b>
4.1 Language of the Bids .....	10
4.2 Bid Currency .....	10
4.3 Letter of Authorisation .....	10
4.4 Clarifications and Amendments .....	10
4.5 Contacting the Tender Inviting Authority .....	10
4.6 Cost of Bidding .....	10
4.7 Earnest Money Deposit (EMD) .....	11
4.8 Tender Envelopes .....	11
4.9 Tender Document (Envelope – A) & Technical Bid (Envelope-B) .....	11
4.9.1 Bid Preparation .....	11
4.9.2 Details to be furnished .....	11
4.9.3 Signing the Bid .....	13
4.10 Price Bid (Envelope- C) .....	13
4.10.1 Details to be furnished .....	13
4.10.2 Signing the Bids .....	13
4.11 Mode of Submission of Tender .....	13
4.12 Tender Opening and Initial Scrutiny .....	14
4.12.1 Technical Bid (Envelope-A) Opening .....	14
4.12.2 Tender Validity .....	14
4.12.3 Initial Scrutiny during Tender opening .....	14
4.12.4 Clarifications by TNHDC .....	14
4.13 Technical Bid Evaluation .....	14
4.13.1 Suppression of facts .....	14
4.13.2 Bid compliance with Eligibility Criteria .....	15
4.13.3 Selection of Technically Qualified Bidder .....	15
4.14 Price Bid Evaluation .....	15
4.14.1 Price Bid opening .....	15
4.14.2 Determination of Lowest Evaluated Price .....	15
4.15 Acceptance of the Bid .....	15
4.16 Notification of Award .....	15
4.17 Refund of EMD amount .....	15
4.18 Remittance of Security Deposit (SD) .....	16
4.19 Award of Contract .....	16
<b>5. Scope of Work .....</b>	<b>17</b>
5.1 Introduction .....	17
5.2 Review and Monitoring .....	17
5.3 Other Clauses .....	17
<b>Annexure-1 Bidder's covering letter .....</b>	<b>18</b>
<b>Annexure-2 Bank Guarantee Format .....</b>	<b>20</b>
<b>Annexure-3 Contract Terms .....</b>	<b>22</b>

A1.	Definitions .....	22
A2.	Interpretations .....	23
A3.	Whole Documents.....	23
A4.	Contract Period .....	23
A5.	Sub-lease .....	23
A6.	Scope of Work .....	24
A7.	Contract Price .....	24
A8.	Issue of Work Order.....	24
A9.	Project Period .....	24
A10.	Payment Terms.....	24
A11.	Taxes .....	25
A12.	Termination of Contract .....	25
A12.1	<i>Termination for default</i> .....	25
A12.2	<i>Termination for Insolvency</i> .....	25
A12.3	<i>Effects of Termination</i> .....	25
A13.	Fraudulent Practice.....	26
A14.	Co-operation .....	26
A15.	Indemnity .....	26
A16.	Severability .....	26
A17.	Limitation of Liability.....	26
A18.	Refund of SD .....	27
A19.	Intellectual Property Rights (IPR) .....	27
A20.	Notices .....	27
A21.	Force Majeure.....	27
A22.	Arbitration.....	28
A23.	Exit Clause.....	28
<b>Technical Bid (Envelope-B) .....</b>		<b>31</b>
T1.	Earnest Money Deposit details .....	31
T2.	Bidder's Bank Account Details.....	31
T3.	Furnish details for meeting the Eligibility Criteria.....	31
T3.1	<i>Bidder's Legal Status</i> .....	31
T3.2	<i>Bidder's Overall Experience</i> .....	32
T3.3	<i>Bidder's relevant experience</i> .....	32
T3.4	<i>Bidder's Annual Turnover</i> .....	32
T3.5	<i>Bidder's local Office details</i> .....	33
T4.	Work Plan Schedule .....	33
<b>Price Bid (Envelope-C) .....</b>		<b>35</b>

<b>Disclaimer</b>
-------------------

- 1) This Tender document is neither an agreement nor an offer by Tamil Nadu Handicrafts Development Corporation Limited (TNHDC) to the prospective Bidders or any other person. The purpose of this Tender document is to provide information to the prospective Bidders that may be useful to them in the preparation and submission of Bid.
- 2) TNHDC does not make any representation or warranty as to the accuracy or reliability or completeness of the information in this Tender document and it is not possible for TNHDC to consider the particular needs of each prospective Bidder. The prospective Bidders shall be deemed to have satisfied itself fully before Bidding as to the correctness and sufficiency of its Bids and price quoted in the Bid to cover all obligations under this Tender. The Bidder shall make all arrangements for execution of the contract at its own cost and transport.
- 3) TNHDC will not have any liability to any prospective Bidder or organisation or any other person under any laws for the loss or expense or damage which may arise from or be incurred in connection with anything contained in this Tender document, any matter deemed to form part of this Tender document, the award of the Contract.
- 4) TNHDC will not be responsible for any delay in receiving the Bids. The publication of this Tender does not imply that TNHDC is bound to select any Bidder or to sign Contract with the Successful Bidder, as the case may be, for the Scope of Work. TNHDC reserves the right to accept/reject any or all of Bids submitted in response to this Tender document at any stage for reasons such as change of scope or technology or non-availability of anticipated fund whatsoever with intimation notice published on the designated websites.
- 5) TNHDC reserves the right to change/ modify/ amend any or all conditions of this Tender document that will be made available on the designated websites.
- 6) This Tender process is governed by the Tamil Nadu Transparency in Tenders Act 1998 with The Tamil Nadu Transparency in Tenders Rules, 2000 as amended from time to time. It is Bidder's responsibility to ensure that they submit all the supporting documents without fail and it is the Bidder's sole responsibility to establish the proof of having relevant experience of the Bidders to full fill the Eligibility requirements otherwise the Bids are liable for rejection.

## Definitions

For the purposes of this Tender unless the subject or context otherwise requires the following terms expressed shall mean as under.

#	Terms	Definitions
1.	Day	A day means a calendar day.
2.	Month	Month means an English calendar month.
3.	Government	Government means the Handlooms, Handicrafts, Textiles and Khadi Department, Government of Tamil Nadu.
4.	Department	Department means the Tamil Nadu Handicrafts Development Corporation Limited under the administrative control of Handlooms, Handicrafts, Textiles and Khadi Department, Government of Tamil Nadu.
5.	Government Organisations	Government Organisations means Central Government, State Government, Public Sector Undertakings of Central/State Governments, and Wholly owned Government Bodies.
6.	Applicable Law	Applicable Law means the Laws and any other instruments having the force of Law in Tamil Nadu as they may be issued and in force from time to time.
7.	Request for Proposal (RFP)	RFP means "Request for Proposal" document issued for "Civil works relating to construction of Display-cum-demonstration centre at Malliakarai, Salem"
8.	Bidder/ Tenderer	Bidder/ Tenderer means the party who makes a formal offer in pursuance of this Tender floated by TNHDC.
9.	Partial offer	Partial offer means that the Bidder not quoting for the entire scope of work or price as asked in the Technical or Price Bid and such Bids are liable for rejection.
10.	Conditional offer	A conditional offer means that the Bidders specify their own terms and conditions for the Scope of Work or quoted Price which would be non-responsive to the tender conditions and such Bids are liable for rejection.
11.	Successful Bidder or TENDERER	Successful Bidder or TENDERER can be interchangeably used and means the Bidder who has been selected for awarding the contract through this Tender process.
12.	Services	Services mean the work to be performed by the TENDERER as per the Scope of Work described in the Tender.

#	Terms	Definitions
13.	Bank Guarantee	Bank Guarantee means the Bank Guarantee given by the TENDERER to TNHDC for a percentage of contract value and for a period specified in this Tender document from the date of signing of the contract and renewed whenever a contract is renewed.
14.	Agreement	The agreement means the agreement to be entered between TNHDC and TENDERER with all its appendices and annexure and any amendments thereto made in accordance with the provisions herein, read in conjunction with this Request for Proposal (RFP) document, and the bid response including its further revisions, associated documentation as the situation may deem necessary.
15.	Force Majeure	Force Majeure means any event that is unforeseeable, beyond the control of either party and not involving the affected party's wilful fault or negligence and materially affecting its capacity to perform its obligations.
16.	Material Breach	Material Breach means not submitting any deliverables, as mentioned in the Scope of Work and not rectifying the default within the days of being notified of the default.
17.	Other Terms	Other terms used in the Tender but not defined under this shall have the same meaning as assigned to such terms under the Information Technology Act, 2000 and the Companies Act, 1956, as the case may be, as amended from time to time.

## **1. Introduction**

The Tamil Nadu Handicrafts Development Corporation Limited (hereinafter called TNHDC) popularly known as "Poompuhar" was incorporated as a Public Limited Company by indulging in the Sales Emporia and Training-cum-Production Centres. The TNHDC promotes exquisite handicrafts like Sculpture, Thanjavur Paintings, Stone Carving, Wood Carving, Mementos/Memorabilia, Jewellery, Pottery, Carpets, etc.

The TNHDC aims to encourage and hone the talent of artisans by training them, helping them improve their product quality and providing them social security by marketing their products through sales showroom and e-commerce platform. The TNHDC build capacities of the artisans and helping them to cater to the changing demands of consumers. It also helps nurture traditional culture, make these ancient arts and crafts flourish.

To encourage artisans to produce innovative design and to market and sell the handicrafts products produced by the artisans under one roof the Corporation has planned to construct a display-cum-demonstration centre at Malliakarai, Salem with infrastructures like handicrafts shops, cafeteria, children's park, landscaping, parking facility, separate toilets for the visitors / general public.

By constructing this display-cum-demonstration centre at Malliakarai, Salem we can improve the day to day sales of artisans from Thammampatti and from various nearby locations by displaying more products and encourage more artisans to participate in the exhibitions held at the various places thereby uplifting the livelihood of the artisans.

For more details about the Corporation may be understood by visiting [www.poompuhar.com](http://www.poompuhar.com) website.

## 2. Tender Schedule

#	Parameters	Details
1.	Tender Inviting Authority, Designation, and Address	The Managing Director Tamil Nadu Handicrafts Development Corporation 759 Anna Salai, Chennai – 600 002 Phone:(044) 2852 1271/1325/5094 Fax: (044) 2852 4231 Email: <a href="mailto:tamilnaduhandicrafts@yahoo.co.in">tamilnaduhandicrafts@yahoo.co.in</a>
2.	Tender Reference	TNHDC/241/DC/22-23
3.	Tender documents available on website	Tender documents can be downloaded from websites <a href="http://www.poompuhar.com">www.poompuhar.com</a> and <a href="http://www.tenders.tn.gov.in">www.tenders.tn.gov.in</a> . from 05.06.2025
4.	Earnest Money Deposit (EMD)	Rs.2,40,000/- (Rupees two lakh forty thousand only) by way of Demand Draft drawn in favour of “Tamil Nadu Handicrafts Development Corporation Ltd” payable at Chennai only.
5.	Pre-Bid meeting date and place	A pre-bid meeting will be held on 11.06.2025 at 12:00 noon at the address mentioned in (1) above.
6.	Bid uploading details	e-Tenders shall be submitted from 13.06.2025.
7.	Due Date and Time of submission of DSC signed Tender	e-Tenders shall be submitted on or before 26-06-2025 @ 12.00 noon.
8.	Date, Time and Place of Opening of Tender	Tender will be opened on 26-06-2025 at 3.00 PM at the address mentioned in (1) above.

### 3. Tender Eligibility Criteria

The Bidders should fulfil the following Eligibility Criteria to participate in the Tender and should submit supporting documents in the Technical Bid.

#	Minimum Eligibility Criteria	Supporting documents required
1.	Bidder should be an organisation registered under the Companies Act 1956 or a Partnership Firm or Sole Proprietary Firm in India	<p><b><u>In case of Registered Companies:</u></b> Copy of the Certificate of Incorporation shall be submitted.</p> <p><b><u>In case of Partnership Firms:</u></b> Copy of the Partnership Registration Certificate shall be submitted.</p> <p><b><u>In case of Sole Proprietary:</u></b> Copy of the Firm /registration shall be submitted.</p> <p><b><u>All the Bidders shall submit the following documents:</u></b> Copy of the Permanent Account Number (PAN) Copy of the GST Registration Certificate</p>
2.	Bidder should have at least 5 years of work experience in the field of constructions work	Copy of the Work Orders issued by various Organisations shall be submitted.
3.	Bidder should have successfully executed construction projects / orders to various Government / Private Organisations in India during the past 3 years.	Copy of the Work Orders with cumulative order value of Rs.300 lakhs issued by various Governments/ Private Organisations shall be submitted.
4.	Bidder should have an average Annual Turnover of Rs.150.00 lakhs or more in the last three Audited Financial years. (Year 2021-2022, Year 2022-2023 & Year 2023-2024)	Bidder should submit Auditor's Certificate with IT return along with Profit and Loss Accounts for the last three audited Financial Years.
5.	Bidder should have Office in Chennai.	Copy of the Address proof of the Chennai Office like Land line telephone bill, rental agreement, rent receipt, etc. in the name of the Bidder shall be submitted.
6.	Bidder should not have been blacklisted	Self-declaration letter to be provided by authorised person of the Organisation.

## **4. Instructions to the Bidders**

### **4.1 Language of the Bids**

The Bids prepared by the Bidder as well as all correspondence and documents relating to the Bid shall be in English only. If the supporting documents and printed literature furnished by the Bidder in any another language, shall be submitted with an accurate English translation duly notarised, in which case, for all purpose of the Bid, the translation shall govern. Bids received without such translation copy are liable to be rejected.

### **4.2 Bid Currency**

Price should be quoted in Indian Rupees (INR) only and Payment shall be made in Indian Rupees only.

### **4.3 Letter of Authorisation**

An Authorisation letter or Power of Attorney from the Board of Directors or Managing Director shall be submitted in case of Registered Company. Authorisation letter signed by all the Partners authorising one of the Partners/Officials shall be submitted in case of Partnership Firm. Authorisation letter signed by the Proprietor authorising self/one of Officials shall be submitted in case of Proprietary-ship Firm. Such Authorisation letter should clearly mention the Authorised person to sign and submit Bids, to take decisions and to execute the work on behalf of the Organisation. The Bids received without the Authorisation letter or Power of Attorney will be summarily rejected.

### **4.4 Clarifications and Amendments**

- 1) At any time after the issue of the tender documents and before the opening of the tender, the Tender Inviting Authority may make any changes, modifications or amendments to the tender documents and upload such changes to the designated websites mentioned in Tender Data sheet.
- 2) TNHDC will not responsible for any misinterpretation of the provisions of this tender document or on account of the Bidder's failure to update the Bid documents based on changes uploaded in the website.

### **4.5 Contacting the Tender Inviting Authority**

Bidders shall not make attempts to establish unsolicited and unauthorised contact with the Tender Inviting Authority or Tender Committees or Tender Accepting Authority after opening of the Tender and prior to the notification of the Award. Any attempt by any Bidder to bring to bear extraneous pressures on the Tender Inviting Authority or Tender Committees or Tender Accepting Authority shall be sufficient reason to disqualify the Bidder.

### **4.6 Cost of Bidding**

The Bidders should bear all costs associated with the preparation and submission of Bids.

#### **4.7 Earnest Money Deposit (EMD)**

- 1) An EMD amount as specified in the Tender Schedule should be paid along with the Technical Bid by way of Demand Draft from any Nationalised Bank or Scheduled Bank in India drawn in favour of "Tamil Nadu Handicrafts Development Corporation Ltd." payable at Chennai only.
- 2) The EMD amount of the unsuccessful Bidders will be refunded after finalisation of the Tender and award of the contract. The EMD amount held by TNHDC till it is refunded to unsuccessful Bidders will not earn any interest thereof.
- 3) The EMD amount of successful Bidder will be converted as part of the Security Deposit (SD) for successful execution of the work.
- 4) The EMD amount will be forfeited by TNHDC, if the Bidder withdraws the bid during the period of its validity specified in the Tender or if the successful Bidder fails to sign the contract or the successful Bidder fails to remit Security Deposit within the timeframe specified in the Tender.

#### **4.8 Tender Envelopes**

- 1) Bidders should examine all Instructions, Terms & Conditions and Technical specifications as given in the Tender document. Failure to furnish information in the Bid or submission of Bids not substantially responsive/viable in all respects will be at Bidders' risk and may result in rejection of bid. Bidders should strictly submit the Bid as specified in the Tender, failing which the bids will be held as non-responsive and will be rejected.
- 2) The Bids should be submitted in three covers namely (1) Tender Document (2) Technical Bid and (3) Price Bid. The tender should be submitted through e-tender only.

#### **4.9 Tender Document (Envelope – A) & Technical Bid (Envelope-B)**

##### **4.9.1 Bid Preparation**

The Tender Document (Envelope -A) & Technical Bid (Envelope-B) as given in the Tender document shall be filled, signed and stamped in all pages. TNHDC will not be responsible for the errors committed in the Bids by the Bidders. The Technical Bid should not strictly contain any price indications as otherwise the Bids will be summarily rejected.

##### **4.9.2 Details to be furnished**

- 1) The EMD amount as specified in the Tender should be submitted. Tenders received without EMD amount will be rejected. However, empaneled bidders with MSME on production of the certificate are exempted.
- 2) A covering letter in the Bidder's Letter Head (in the format given in Annexure-1) should be submitted.
- 3) An Authorisation letter or Power of Attorney as specified in the Tender document should be submitted. The Tenders received without Authorisation letter or Power of Attorney will not be considered for further processing.

- 4) The tender document in full along with Corrigenda shall be printed, signed by the Authorised Signatory of Tender, sealed in all pages and submitted in the Technical Bid as a token of acceptance of the Tender conditions.
- 5) The Tender Document (Envelope -A) & Technical Bid (Envelope-B) should be duly filled in the format given in the Tender document, signed by the Authorised Signatory and stamped in all the pages and should be submitted.
- 6) All the supporting documents to establish proof of Bidder's eligibility to participate in the Tender should be signed by the Authorised Signatory and stamped in all pages and should be submitted. The supporting documents shall establish Bidder's eligibility otherwise the Bid will be rejected.
- 7) The Auditor's Certificate with IT return, Annual Report, Profit & Loss Account should be signed by the Authorised Signatory and stamped in all pages and should be submitted.
- 8) Any other documents as specified in the Tender should be signed by the Authorised Signatory and stamped in all pages and should be submitted.
- 9) The tenderer shall submit full details of his ownership and control or, if the tenderer is a partnership, joint venture or consortium, full details of ownership and control of each member thereof.
- 10) If the tenderer is a joint venture / consortium / group / partnership of two or more persons, all such persons shall be jointly and individually liable to Tamil Nadu Handicrafts Development Corporation Limited for the fulfilment of the terms of the contract. Such person shall designate one of them to act as leader with authority to sign. The joint venture / consortium / group / partnership shall not be altered without the approval of the TNHDC.
- 11) Tenderer shall submit only one tender either by himself or as a partner in joint venture or as a member of consortium. If a tenderer or if any of the partners in a joint ventures or any one of the members of the consortium submits the tender additionally, both the tender are liable to be rejected.
- 12) In case the tenderer has any doubt about the meaning of anything contained in the tender document, he/she shall seek clarification from The Assistant Manager (DC), Tamil Nadu Handicrafts Development Corporation Limited, sufficiently well before submitting the bid. Any such clarification, together with all details on which clarification had been sought, will also be forwarded to all tenderer without disclosing the identity of the tenderer seeking clarification. All communications between the bidders and the Assistant Manager (DC), Tamil Nadu Handicrafts Development Corporation Limited shall be carried out in writing through email [tamilnaduhandicrafts@yahoo.co.in](mailto:tamilnaduhandicrafts@yahoo.co.in) .
- 13) Any and all the exemption which the tenders may have, in any of the clauses in the specification and general conditions of service should be clearly outlined in the SCHEDULE – A (Part B– To be attached I).

- 14) It may be noted that the tenders not containing full particulars called for in complete shape are liable to be rejected. Tenders not properly authenticated by the tenderer will be rejected. Tender documents should be duly signed by the tenderer in all pages.
- 15) Tenders and all accompanying documents shall be in English. In case any accompanying documents are in other languages, it shall be accompanied by an English translation. The English version shall prevail in matters of interpretations.
- 16) All the columns shall be clearly typed. The tenderer should quote the number, rates and amount tendered by him/ her/ them in figures. The tenderer shall take care that the rate and amount may be written in such a way that interpolation is not possible. Mandatory column should be duly filled, otherwise the tender liable for rejection.

#### **4.9.3 Signing the Bid**

The Technical Bid shall be typed and signed by the Authorised Signatory on all pages of the Bid and stamped. Any alterations or deletions will be treated as valid only if they are attested with the full signature by the Authorised Signatory.

### **4.10 Price Bid (Envelope- C)**

#### **4.10.1 Details to be furnished**

- 1) All the Price items as asked in the Tender should be filled in the Price Bid exclusive of taxes. The Tender is liable for rejection if Price Bid contains partial offers or conditional offers.
- 2) The price quoted by the Bidder shall include cost and expenses on all counts viz. cost of equipment, materials, tools/ techniques/ methodologies, delivery & installation, manpower, supervision, administration, overheads, travel, lodging, boarding, in-station and outstation expenses, etc. and any other cost involved to fulfil the scope of work as specified in the Tender.
- 3) The cost quoted by the Bidder shall be kept firm for a period specified in the Tender from the date of opening of the Tender. The Bidder should keep the Price constant during the period of Contract including during the period of extension of time if any. Escalation of cost will not be permitted during the said periods or during any period while providing services whether extended or not for reasons other than increase in duties / taxes payable to the Governments in India within the stipulated delivery period.

#### **4.10.2 Signing the Bids**

The Bids shall be typed, signed by the Authorised Signatory in all pages of the Bid and stamped. Any alterations or deletions shall be treated valid only if they are attested by full signature by the Authorised Signatory.

### **4.11 Mode of Submission of Tender**

- 1) The Bid should be uploaded through online mode only as per the tender norms; no bids will be entertained physically.
- 2) TNHDC will not be liable or responsible for any uploading or downloading of tender.
- 3) The Bids received through post or email will be not considered and summarily rejected.

the forfeiture of the EMD/ SD as the case may be.

## **4.12 Tender Opening and Initial Scrutiny**

### **4.12.1 Technical Bid (Envelope-A) Opening**

The Tender Document (Envelope A) and Technical Bid cover (Envelope-B) will be opened at the place, date and time as specified in the Tender Schedule. The Tender will be opened in the presence of the Bidders who are willing to be present. The Authorised Signatory of the Tender or their representative shall attend the Tender opening.

### **4.12.2 Tender Validity**

The price quoted by the Bidder shall be kept valid until the project is completed from the date of Tender opening of Tender Document (Envelope – A) & Technical Bid Envelope-B).

### **4.12.3 Initial Scrutiny during Tender opening**

After opening the Tender Document (Envelope – A) and Technical Bid (Envelope-A) of the tender, an initial scrutiny will be held for the following aspects.

- i) Whether Tender Document (Envelope – A), Technical Bid (Envelope-B) and Price Bid (Envelope-C) are submitted in three separate covers.
- ii) Whether the EMD amount has been paid only through online mode.

All Bids fulfilling the above conditions alone will be considered for further evaluation otherwise the Bid will be rejected.

### **4.12.4 Clarifications by TNHDC**

When deemed necessary, TNHDC may seek bonafide clarifications on any aspect from the Bidder. However, that would not entitle the Bidder to change or cause any change in the substance of the Bid or price quoted. During the course of Technical Bid evaluation, TNHDC may seek additional information or historical documents for verification to facilitate decision making.

## **4.13 Technical Bid Evaluation**

### **4.13.1 Suppression of facts**

- 1) During the Technical Bid evaluation, if any suppression or misrepresentation of information is brought to the notice of TNHDC, TNHDC shall have the right to reject the Bid. If the Bidder has already been selected, then TNHDC would terminate/void the contract as the case may be without any compensation to the Bidder and the EMD/ Security Deposit as the case may be shall be forfeited.
- 2) Bidders should note that any facts and figures like quantity, numbers, currency value, etc., in the supporting documents submitted by the Bidders for proving their eligibility criteria is found suppressed or erased, TNHDC shall have the right to seek the correct facts and figures, or reject such Bids. It is the Bidders responsibility to submit the full copies of the supporting documents to prove its eligibility otherwise TNHDC may not consider such supporting documents.

#### **4.13.2 Bid compliance with Eligibility Criteria**

Tender committee will be involved for evaluation of Technical Bid with respect to Eligibility criteria requirements as specified in the Tender. The Technical Evaluation will be conducted based on the supporting documents submitted by the Bidders. The Bids which establishes the Tender Eligibility Criteria in full will be considered for further processing. The Bids will be held non-responsive and rejected if the Bids do not establish the eligibility of the Bidders and will become unsuccessful in the Tender.

#### **4.13.3 Selection of Technically Qualified Bidder**

Those Bidders who fulfil the Eligibility Criteria will be the Technically Qualified Bidders in the Tender. Bidders will be assessed only to improve the quality levels in the proposed work under this Tender. The Price Bids of the Technically Qualified Bidders alone will be opened and evaluated.

### **4.14 Price Bid Evaluation**

#### **4.14.1 Price Bid opening**

The Price Bid cover (Envelope-C) will be opened at the place, date and time as specified in the Tender Schedule. The Technically Qualified Bidders alone will be invited for Price Bid opening. The Authorised Signatory of the Tender or their representative shall attend the Price Bid opening.

#### **4.14.2 Determination of Lowest Evaluated Price**

- 1) The lowest evaluated price will be called as L1 bidder. The TNHDC may negotiate with the L1 Bidder for further reduction of price and improvement in the scope of work.
- 2) In the event that more than one Technically Qualified Bidder quoted the L1 price, both L1 Bidders will be asked to provide their best and final price offer.

### **4.15 Acceptance of the Bid**

The final acceptance of the Bids is entirely vested with the Tender Accepting Authority who reserves the right to accept or reject any or all of the Tenders in full or in part. The Tender Accepting Authority may also cancel the Tender for reasons such as changes in the scope of work, new technologies, court orders, accidents or Force Majeure conditions. After acceptance of the Tender by Tender Accepting Authority, if any of the Bidder withdraws its Bid whatsoever the reason, then the withdrawn Bid will be rejected and the EMD amount submitted by the Bidder will be forfeited.

### **4.16 Notification of Award**

Tender will be awarded within a period of 120 days from the date of uploading of the tender.

### **4.17 Refund of EMD amount**

The EMD amount of the unsuccessful Bidders will be refunded after award of the contract within a reasonable period. The EMD amount paid by the Successful Bidder will be converted as part of the Security Deposit payable by the Successful Bidder. If the successful Bidder submits Security Deposit in full by way of irrevocable Bank Guarantee, their EMD will be refunded.

- a) Each bidder must pay an Earnest Money Deposit of Rs.2,40,000/- (Rupees two lakh forty thousand only) by way of demand draft in favour of "Tamil Nadu Handicrafts Development Corporation Limited", payable at Chennai or "Bank Guarantee" also can be accepted.
- b) Tenders not accompanied by the EMD for the notified amount in the form prescribed shall be summarily rejected.
- c) The Earnest Money Deposit of unsuccessful tenderers will be returned after the finalization of tender within a reasonable time consistent with the rules and regulations.
- d) The Earnest Money Deposit furnished for any other tenders by the bidders and if any already available with the Tender Inviting Authority cannot be considered as an EMD for this tender.
- e) The EMD amount held by the Tender Inviting Authority till it is returned to the unsuccessful bidder will not earn any interest thereof.
- f) The EMD amount of successful bidders will be retained as a part of Security Deposit (SD) for successful execution of the project.
- g) The EMD amount shall be forfeited if: The bidder withdraws the bid during the period of bid validity specified in the tender (or) in the case of the successful bidder, if the bidder fails to sign the contract or to remit Security Deposit or adhere to the time schedule.

#### **4.18 Remittance of Security Deposit (SD)**

- 1) The Successful Bidder shall be required to remit a Security Deposit equivalent to 5% (Five percent) on the total value of the order, inclusive of EMD amount by way of demand draft drawn in favour of "Tamil Nadu Handicrafts Development Corporation Limited" payable at Chennai or in the form of unconditional irrevocable Bank Guarantee in the Bank Guarantee Format (in the format given in Annexure-2), valid for a period equivalent to the delivery period plus exit period from the date of notification of award.
- 2) The Security Deposit furnished by the Successful Bidder in respect of the tender will be returned to them after successful fulfilment of Contract. The Security Deposit held by TNHDC till it is refunded to the Successful Bidder will not earn any interest thereof.

#### **4.19 Award of Contract**

The Successful Bidder shall execute a Contract (in the format as given in Annexure-3) in Rs.100/- non-judicial stamp paper bought in Tamil Nadu only in the name of the Bidder, within one week from the date of remittance of Security Deposit. The Security Deposit will be forfeited if the Successful Bidder fails to sign the contract.

## 5. Scope of Work

### 5.1 Introduction

The primary objective is to construct a comprehensive display-cum-demonstration centre at Malliakarai, Salem. This facility will be strategically located on the State Highway connecting Attur and Rasipuram. Spanning over 5000 sq.ft, the centre is designed to include a main display and demonstration hall. Within this hall, there will be two dedicated platforms where local artisans can actively demonstrate their wood carving techniques. The items carved, from initial stages to finished products, will be showcased here. Additionally, the centre will house three distinct stalls: one allocated to Poompuhar (TNHDC) and the remaining two available for other artisans and vendors. To enhance the visitors' experience, a cafeteria will be set up, kitchen space, a service area, and a store room. The surrounding area will be developed to include a children's park, landscaped gardens, and a secure parking facility with toilet facilities, all enclosed within compound walls.

This initiative aims to provide a platform for artisans from Thammampatti to encourage their talents, not only display their finished products but also to actively demonstrate their intricate carving process. This visibility on the highway is expected to attract the public, allowing them to witness the traditional craft of wood carving first-hand and offering a place to relax and enjoy food and activities.

### 5.2 Review and Monitoring

The tenderer shall be accountable to the TNHDC for successful completion of the work for which TNHDC will hold periodical review meeting. The TENDERER should attend the meeting without fail and report the progress to TNHDC. The decisions made during the review shall be strictly adhered to by the TENDERER for timely completion of the job.

### 5.3 Other Clauses

Please refer to the important clauses like Delivery Schedule, Payments and Taxes, Service Level Agreement (SLA), Penalties, Exit Clause, etc., in the Contract.

<b>Annexure-1 Bidder's covering letter</b>
--

(Letter should be submitted in Bidders' Letter Head)

Letter ref.: \_\_\_\_\_ dated \_\_\_\_\_

To ,  
The Managing Director  
Tamil Nadu Handicrafts Development Corporation Ltd  
759 Anna Salai, Chennai – 600 002

Dear Sir,

Sub: Undertaking for "Civil construction of Display-cum-demonstration centre at Malliakarai, Salem" – Reg.

Ref: Tender Reference \_\_\_\_\_

1. We have examined the "Civil construction of Display-cum-demonstration centre at Malliakarai, Salem" as specified in the Tender. We undertake to meet the requirements and provide the services as set out in the Tender document.
2. We attach our Tender Document ( Envelope- A), Technical Bid (Envelope-B) and Price Bid (Envelope-C) in separate covers and placed inside an outer cover as required by the Tender conditions both of which together constitutes our proposal, in full conformity with the said Tender.
3. We have read the provisions of this Tender and confirm that these are acceptable to us. We further declare that additional conditions and deviations, if any, found in our response shall not be given effect to.
4. We undertake, if our Bid is accepted, to adhere to the scope of work as specified in the Tender or such modified plan as may subsequently be agreed.
5. We agree to unconditionally accept all the terms and conditions set out in the Tender document and also agree to abide by this Bid response for a period as mentioned in the Tender from the date of bid opening and it shall remain binding upon us with full force and virtue, until within this period a formal contract is prepared and executed, this Bid response, together with your written acceptance thereof in your notification of award, shall constitute a binding contract between us and TNHDC.
6. We affirm that the information contained in the Technical Bid or any part thereof, including its exhibits, schedules, and other documents and instruments delivered or to be delivered to TNHDC is true, accurate, and complete. This proposal includes all information necessary to ensure that the statements therein do not in whole or in part mislead TNHDC as to any material fact.
7. We agree that TNHDC is not bound to accept the lowest or any Bid that may receive. We are also aware that you reserve the right in absolute sense to reject all or sany of the products/ service specified in the bid response without assigning any reason whatsoever.

8. I hereby confirm that I am entitled to act on behalf of our organisation and empowered to sign the Bid document as well as such other documents. The Power of Attorney/ Letter of Authorisation required in this connection is enclosed in the Technical Bid.

Signature of the Authorised Signatory of Tender:

Name of Authorised person:

Designation of Authorised person

Name and Address of Bidder:

Stamp of bidder:

<b>Annexure-2 Bank Guarantee Format</b>
---

(To be executed in Rs.100/- Stamp Paper purchased in Tamil Nadu)

Letter ref.: \_\_\_\_\_ dated \_\_\_\_\_

To  
The Managing Director  
The Tamil Nadu Handicrafts Development Corporation Limited  
759 Anna Salai,  
Chennai - 600002

Bank Guarantee No:  
Amount of Guarantee:  
Guarantee covers from:  
Last date for lodgement of claim:

This Deed of Guarantee executed by ..... (Bankers Name & Address) having our head Office at .....(address) (hereinafter referred to as "the Bank") in favour of The Tamil Nadu Handicrafts Development Corporation Ltd (hereinafter referred to as "TNHDC") for an amount not exceeding Rs.\_\_\_\_\_-/- (Rupees \_\_\_\_\_ Only) as per the request of M/s. \_\_\_\_\_ having its office address at \_\_\_\_\_ (hereinafter referred to as TENDERER) against Notification of Award \_\_\_\_\_ dated \_\_\_\_/\_\_\_\_/\_\_\_\_ of \_\_\_\_\_. This guarantee is issued subject to the condition that the liability of the Bank under this guarantee is limited to a maximum Rs.\_\_\_\_\_-/- (Rupees \_\_\_\_\_ Only) and the guarantee shall remain in full force up to \_\_\_\_ months from the date of Bank Guarantee and cannot be invoked otherwise by a written demand or claim by TNHDC under the Guarantee served on the Bank or before \_\_\_\_ months from the date of Bank Guarantee.

AND WHEREAS it has been stipulated by you in the said ORDER that the TENDERER shall furnish you with a Bank Guarantee by a Scheduled/Nationalised Bank for the sum specified therein as security for compliance with the TENDERER'S performance obligations for a period of in accordance with the contract.

AND WHEREAS we have agreed to give the TENDERER a Guarantee.

THEREFORE, we (Bankers address)....., hereby affirm that we are Guarantors and responsible to you on behalf of the TENDERER up to a total of Rs.\_\_\_\_\_-/- (Rupees \_\_\_\_\_ Only) and we undertake to pay you, upon your first written demand declaring the TENDERER to be in default under the contract and without any demur, cavil or argument, any sum or sums within the limit of Rs.\_\_\_\_\_-/- (Rupees \_\_\_\_\_ Only) as aforesaid, without your needing to prove or show grounds or reasons for your demand or the sum specified therein.

This Guarantee is valid until \_\_\_\_ months from the date of Bank Guarantee.

Notwithstanding, anything contained herein

Our liability under this guarantee shall not be exceed Rs.\_\_\_\_\_-/- (Rupees \_\_\_\_\_ Only). This Bank Guarantee shall be valid up to \_\_ months from the date of Bank Guarantee and we are liable to pay the guaranteed amount or any part thereof under this Bank Guarantee only and only if you serve upon us a written claim or demand on or before.

In witness whereof the Bank, through its authorised Officer, has set its, hand and stamp on this \_\_\_\_\_ at Chennai.

Witness:  
(Name in Block Letters)

(Signature)

### **Annexure-3 Contract Terms**

(To be executed on a Rs. 100/- Stamp paper by the Successful Bidder)

This Contract entered into this \_\_\_\_\_ day of \_\_\_\_\_ at Chennai between;

The Tamil Nadu Handicrafts Development Corporation Ltd, having its Registered Office at 759 Anna Salai, Chennai-600 002 hereinafter referred to as TNHDC (Which expression shall unless repugnant to the context or meaning thereof include its successors and assigns) of the First part.

and

M/s. \_\_\_\_\_ having its Registered Office \_\_\_\_\_ hereinafter referred to as the TENDERER (Which expression shall unless repugnant to the context or meaning thereof include its successors and assigns) of the Second part.

Whereas TNHDC invited a Tender \_\_\_\_\_ "Civil works relating to construction of Display-cum-demonstration centre at Malliakarai, Salem" and the TENDERER herein has been selected in the Tender for execution of the work as detailed in the Tender Documents.

Whereas TNHDC and the TENDERER, in pursuance thereof have arrived at the following terms and conditions.

#### **A1. Definitions**

For the purposes of this Contract unless the subject or context otherwise requires the following terms expressed shall mean as under.

1. "Day" means a calendar day
2. "Month" means English calendar month
3. "Applicable Law" means the Laws and any other instruments having the force of Law in Tamil Nadu as they may be issued and in force from time to time
4. "Services" means the work to be performed by the TENDERER as per the Scope of Work described in the Tender
5. "Bank Guarantee" means the Bank Guarantee given by the TENDERER to TNHDC for percentage of contract value and for a period specified in this Tender document from the date of signing of the contract and renewed whenever contract is renewed.
6. "Contract" means this Contract entered between TNHDC and TENDERER
7. "Whole Documents" means the documents listed under Whole Documents with all its appendices and annexure and any amendments thereto made in accordance with the provisions of Request for Proposal (RFP) document as the situation may deem necessary.

8. "Force Majeure" means an event that is unforeseeable, beyond the control of either party and not involving the affected party's wilful fault or negligence and materially affecting its capacity to perform its obligations.
9. "Material Breach" means not submitting any deliverables, as mentioned in the Scope of Work and not rectifying the default within the days of being notified of the default
10. Other terms used in the Contract but not defined under this shall have the same meaning as assigned to such terms under the Information Technology Act, 2000 and the Companies Act, 1956, as the case may be, as amended from time to time.

## **A2. Interpretations**

- a) If the context so requires it, singular means plural and vice versa.
- b) Entire Agreement: The Contract constitutes the entire agreement between the TNHDC and the TENDERER and supersedes all communications, negotiations and agreements (whether written or oral) of parties with respect thereto made prior to the date of Contract.
- c) Amendment: No amendment or other variation of the Contract shall be valid unless it is in writing, is dated, expressly refers to the Contract, and is signed by a duly authorised signatory of each party thereto.
- d) Severability: If any provision or condition of the Contract is prohibited or rendered invalid or unenforceable, such prohibition, invalidity or unenforceability shall not affect the validity or enforceability of any other provisions and conditions of the Contract.

## **A3. Whole Documents**

The following documents shall be deemed to form and be read and construed as part of this Contract.

- a) Tender Document in full issued by TNHDC
- b) Corrigenda, Clarifications and Amendments issued by TNHDC for the Tender document
- c) Bid received from the TENDERER
- d) Detailed proposal and final offer of the TENDERER
- e) Notification of Award issued by TNHDC
- f) Purchase Order issued by TNHDC
- g) Correspondence made by both the parties from time to time during the period of the contract.

## **A4. Contract Period**

This Contract shall remain in force until completion of the project from the date of signing of this Contract.

## **A5. Sub-lease**

The awardee of the contract is not allowed to sub-lease the project to any other third party.

#### **A6. Scope of Work**

The primary objective is to construct a comprehensive display-cum-demonstration centre at Malliakarai, Salem. This facility will be strategically located on the State Highway connecting Attur and Rasipuram. Spanning over 5000 sq ft, the centre is designed to include a main display and demonstration hall. Within this hall, there will be two dedicated platforms where local artisans can actively demonstrate their wood carving techniques. The items carved, from initial stages to finished products, will be showcased here. Additionally, the centre will house three distinct stalls: one allocated to Poompuhar (TNHDC) and the remaining two available for other artisans and vendors. To enhance the visitor experience, a cafeteria will be set up, kitchen space, a service area, and a store room. The surrounding area will be developed to include a children's park, landscaped gardens, and a secure parking facility with toilet facilities, all enclosed within compound walls.

This initiative aims to provide a platform for artisans from Thammampatti to encourage their talents, not only display their finished products but also to actively demonstrate their intricate carving process. This visibility on the highway is expected to attract the public, allowing them to witness the traditional craft of wood carving first-hand and offering a place to relax and enjoy food and activities..

#### **A7. Contract Price**

This finally negotiated and agreed price is constant and not subject to enhancement.

#### **A8. Issue of Work Order**

After payment of Security Deposit and execution of the Contract, formal Work Order will be issued to the Successful Bidder by TNHDC. The payment will be based on mile stone performance.

#### **A9. Project Period**

The work shall be completed within 180 days or 6months from the date of handing over of site.

#### **A10. Payment Terms**

- 1) No advance amount will be paid.

#	Milestones	No of Days	Payment mode
1.	Preparation of the site/ DTCP Approvals/ Panchayat Approval	30 days	DTCP/ Panchayat approval payment will be made by TNHDC
2.	Completion of brick work	45 days	20% (on completion)
3.	Layer of concrete roof work	30 days	20% (on completion)
4.	Finishing the interior work like plastering, flooring, electrical etc.,	45 days	30% (on completion)
5.	Painting work completion	15 days	10% (on completion)
6.	Handing over of site	15 days	15% (on completion)

- 2) Balance 5% payment will be retained as performance guarantee after the expiry of the contract and the balance will be paid after one year.

#### **A11. Taxes**

The Taxes as applicable for the services within the Delivery Schedule as specified in the Contract will be paid by the awardee. The TENDERER shall have full and exclusive liability for remittance of Taxes and other statutory payments to the respective statutory authorities payable under any or all of the Statutes/ Laws/ Acts etc., now or hereafter imposed. The TENDERER shall submit the proof of Tax remittance to TNHDC when sought.

#### **A12. Termination of Contract**

##### **A12.1 Termination for default**

- 1) TNHDC may without prejudice to any other remedy for breach of contract, by written notice of default with a notice period of 30 days, sent to the TENDERER, terminate the contract in whole or part;
  - (i) If the TENDERER fails to deliver any or all of the goods/services within the period specified in the Contract, or fails to supply the items/services as per the Delivery Schedule or within any extension thereof granted by TNHDC; or
  - (ii) If the TENDERER fails to perform any of the obligations under the contract; or
  - (iii) If the TENDERER, in the considered judgement of TNHDC, has engaged in fraudulent and corrupt practices in competing for or in executing the Contract.
- 2) In the event TNHDC terminates the Contract in whole or in part, TNHDC may procure, upon terms and in such manner as it deems appropriate, the goods and services similar to those delivered and the TENDERER shall be liable to TNHDC for any additional costs for such similar goods/services.

##### **A12.2 Termination for Insolvency**

The TNHDC may at any time terminate the Contract by giving written notice with a notice period of 30 days to the TENDERER, if the TENDERER becomes bankrupt or otherwise insolvent. In this event, termination will be without compensation to the TENDERER, provided that such termination will not prejudice or affect any right of action or remedy that has accrued or will accrue thereafter to TNHDC.

##### **A12.3 Effects of Termination**

- 1) In the event of termination of this Contract by the TNHDC, the compensation payable to the TENDERER will be decided in accordance with the Terms of Payment for the milestones completed by the TENDERER and duly accepted by TNHDC.
- 2) Upon issuance of notice for termination of this Contract by TNHDC, the Parties shall mutually agree upon a transition plan and comply with such a plan. The TENDERER agrees to extend full cooperation and support during the transition process.

- 3) In the event of termination, before expiry of Contract or otherwise, TENDERER agrees to return all the data, documents, reports and other assets provided by TNHDC for the purpose of fulfilling the finalised Scope of Work.

#### **A13. Fraudulent Practice**

The TENDERER represents and undertakes that the TENDERER has not given or promised to give directly or indirectly to any person in TNHDC, the bribes or the TENDERER involved in fraudulent practices in obtaining the Contract. Any breach of this undertaking by TENDERER or any one employed by them entitle TNHDC to terminate the Contract either wholly or in part and recover from TENDERER any loss arising from such termination without any entitlement or compensation to TENDERER. The TNHDC will blacklist the TENDERER from bidding any Tender of TNHDC for a minimum period of one year. A decision of TNHDC to the effect of breach of the undertaking shall be final and binding on TENDERER.

#### **A14. Co-operation**

The TNHDC will provide all the necessary information, data and reports needed by the TENDERER in time and manner for fulfilling the contractual obligations. The TNHDC will grant necessary consents, approvals, authorisations and communication with external agencies from time to time as needed by the TENDERER. The TNHDC will provide replies within reasonable timeframe, on all requests and queries submitted by TENDERER to carry out the obligations.

#### **A15. Indemnity**

The TENDERER shall indemnify, defend and hold the TNHDC and their officers, employees, successors and assigns harmless from and against any and all losses arising from personal injury or claims by third parties pursuant to this Contract, including but not limited to any equipment, software, information, methods of operation or other intellectual property (or the access, use or other rights thereto) provided by the TENDERER.

#### **A16. Severability**

If for any reason whatever, any provision of this Contract is or becomes invalid, illegal or unenforceable or is so declared by any Honourable Court of competent jurisdiction, the validity, legality or enforceability of the remaining provisions shall not be affected in any manner, and the Parties will negotiate in good faith with a view to agreeing to one or more provisions which may be substituted for such invalid, unenforceable or illegal provisions, as nearly as is practicable.

#### **A17. Limitation of Liability**

The aggregate liability of the TENDERER under this Contract or otherwise in connection with the work to be performed hereunder, shall in no event exceed the contract price.

#### **A18. Refund of SD**

The Security Deposit will be refunded to the TENDERER upon successful completion of the Contract. Such completion would be determined when the Contractual obligations are fulfilled as per the Contract terms and fulfilment of Work Orders issued by TNHDC from time to time.

#### **A19. Liquidated Damages (LD)**

In the event of non-fulfilment of delivery schedule or tender conditions, Liquidated Damages at the rate of 1% per week on the value of the contract will be levied subject to a maximum of 5%. In case of any delay in the supply, installation and commissioning, Liquidated Damages will be deducted from the Bills submitted by the VENDOR at the discretion of TNHDC. In case of non-fulfilment of Service Level Agreement or any of the Tender conditions, Liquidated Damages will be claimed from the Bank Guarantee submitted by the VENDOR.

#### **A20. Intellectual Property Rights (IPR)**

- 1) The ownership and IPR of the deliverables made under this Contract would always rest with the TNHDC. The ownership and IPR of the Proprietary tools and/or other tools used by the TENDERER or third party or parties for the purpose of design, development and making the deliverables would always rest with the respective parties.
- 2) In relation to any inventions, discoveries or other Intellectual Property Rights, the TENDERER shall make full and complete disclosure to the TNHDC including any or all information in the TENDERER's possession relating to their IPR/patentability if any.
- 3) Notwithstanding anything contrary contained herein, the TENDERER shall defend, indemnify and hold harmless the Tamil Nadu Handicrafts Development Corporation or its employees or its affiliates against any suit or claim brought by a third party that a possession or use of software, programs, hardware, materials or documents infringes such third parties Intellectual Property Rights or its misuse of its confidential information by the TENDERER.

#### **A21. Notices**

Any notice from one party to other given or required to be given hereunder shall be given by either:

- 1) Mailing the same by registered mail, postage prepaid, return receipt requested; or
- 2) Having the same delivered by courier with receipt acknowledged at the address set forth above or with other addresses and to the attentions of such other person or persons as may hereafter be designated by like notice hereunder and any such notice shall be deemed to have been served if sent by post on the date when in the ordinary course of post, it would have been delivered at the addresses to which it was sent or if delivered by courier on the date of acknowledgement of receipt.

#### **A22. Force Majeure**

Neither TNHDC nor the TENDERER shall be liable to the other for any delay or failure in the performance of their respective obligations except causes or contingencies beyond their reasonable control due to Force Majeure conditions such as:

- 1) Any act of lighting, earthquake, landslide, etc or other events of natural disaster of rare severity
- 2) Meteorites or objects falling from aircraft or other aerial devices, travelling at high speeds
- 3) Fire or explosion, chemical or radioactive contamination or ionizing radiation
- 4) Epidemic or plague
- 5) Act of war (whether declared or undeclared), threat of war, invasion, armed conflict or act of foreign enemy, unexpected call up of armed forces, blockade, embargo, revolution, riot, religious strife, bombs or civil commotion, sabotage, and terrorism

#### **A23. Arbitration**

- 1) Any dispute or difference whatsoever arising between the parties to the Contract, out of or relating to the construction, meaning, scope, operation or effect of the Contract or validity of the breach thereof, which cannot be resolved through negotiation process, shall be referred to a sole Arbitrator to be appointed by the Managing Director of TNHDC. The Arbitration shall be held in Chennai, Tamil Nadu and the language shall be English only.
- 2) It is a term of the contract that the party invoking arbitration shall specify all disputes to be referred to arbitration at the time of invocation of arbitration and not thereafter.
- 3) It is also a term of the contract that neither party to the contract shall be entitled to seek interest and the arbitrator should not grant interest.
- 4) The Arbitral Tribunal shall give reasoned award and the same shall be final, conclusive and binding on the parties.
- 5) The venue of the arbitration shall be the Chennai and language English.
- 6) The fees of the arbitrator and expenses incidental to the arbitration proceedings shall be borne equally by the parties.
- 7) Subject to as aforesaid, the provisions of the Arbitration and Conciliation Act 1996 and any statutory modifications or re-enactment in lieu thereof shall apply to the arbitration proceedings under this clause.
- 8) Jurisdiction: Subject to the above, the Courts in Chennai, Tamil Nadu alone shall have jurisdiction in this matter.

#### **A24. Exit Clause**

- 1) At the time of expiry of contract period, as per the contract between the parties, the TENDERER should ensure a complete knowledge transfer by their deployed professional to the TNHDC staff within a period of 2 weeks.

- 2) The TENDERER at the time of exit shall submit all information relating to the services rendered including but not limited to documents, records, configuration, bugs/errors and its resolutions relating to the services reasonably necessary to TNHDC or any other agency identified by TNHDC to carryout due diligence in order to transition the provision of services or any other agency identified. All properties provided by the TNHDC shall be returned. Any authorisations or letters issued by TNHDC for using the name of TNHDC on the field shall be null and void.
- 3) The updated contents or programs created under the contract shall be the property of TNHDC and should be handover by the TENDERER to TNHDC before exit of the contract. The TENDERER shall not retain any copy of programs or contents in any form and a declaration to this respect shall be given by the TENDERER to TNHDC.

In Witness whereof the parties hereto have signed on the day, month and year above written in the presence of

For and on behalf of  
TENDERER

For and on behalf of TNHDC

Witness:

Witness:

Witness:

Witness:



## **Request for Proposal (RFP)**

---

### **Civil works relating to construction of** **Display-cum-demonstration centre at** **Malliakarai, Salem**

**Tender Ref.: TNHDC/241/DC/22-23**

## **Technical Bid (Envelope-B)**

---

**The Tamil Nadu Handicrafts Development Corporation Ltd (TNHDC)**

759 Anna Salai, Chennai – 600 002

Phone:(044) 2852 1271/1325/5094

Fax: (044) 2852 4231

Email: [tamilnaduhandicrafts@yahoo.co.in](mailto:tamilnaduhandicrafts@yahoo.co.in)

## Technical Bid (Envelope-B)

### T1. Earnest Money Deposit details

#	Descriptions	Please fill up the details
1.	Name of the Bank	
2.	Transaction Number	
3.	Transaction Date	
4.	Transaction Amount	

### T2. Bidder's Bank Account Details

#	Descriptions	Please fill up the details
1.	Bank Name	
2.	Branch Name and address	
3.	Account No.	
4.	IFSC code	
5.	MICR code	

### T3. Furnish details for meeting the Eligibility Criteria

#### T3.1 Bidder's Legal Status

#	Description	Please fill up the details
1.	Name of the Bidder	
2.	Legal Status (Company/ Partnership/ Proprietary-ship)	
3.	Certificate of Registration or Firm Registration no. and date	
4.	Registered office address, contact person, Personal Telephone No. and Email	
5.	<b>Authorised Signatory of Tender</b>	
	Name	
	Designation	
	Office Address	
	Personal Telephone Number	
	Email Address	
	Please enclose Letter of Authorisation or Power of Attorney to sign and submit the Tender	
6.	Permanent Account Number (PAN) details and enclose copy	
7.	Please furnish GST registration no. and date and enclose copy	

### T3.2 Bidder's Overall Experience

#	Description	Please fill up the details
1.	No. of years in Construction of Civil Works	From Year: _____ To Year: _____ No. of Years: _____
2.	Please furnish details of work orders executed	
3.	Customer name	
4.	Project name	
5.	Work Order or Agreement reference	
6.	Project status	
7.	Enclose copy of the Work Order or Agreement	

### T3.3 Bidder's relevant experience

#	Description	Work Order-1	Work Order-2	Work Order-3
1.	Customer name			
2.	Project name			
3.	Project description			
4.	Geographical spread			
5.	Value of the order			
6.	Work Order reference			
7.	Current status of the project			
8.	Enclose copies of the Work Order			

### T3.4 Bidder's Annual Turnover

#	Description	Please fill up the details
1.	Year 2021-2022	
2.	Year 2022-2023	
3.	Year 2023-2024	
4.	Average Annual Turnover for the last 3 Audited Financial Years	
5.	Please enclose Auditor's Certificate with IT return, Annual Report and Profit & Loss statement for the above Audited Financial years	

### **T3.5 Bidder's local Office details**

#	Description	Please fill up the details
1.	Bidder's local office address in Chennai	
2.	Name of the local representative and contact details	
3.	Copy of the Chennai office landline phone bill/ rent agreement/ rent receipt	

### **T4. Work Plan Schedule**

The format of work plan schedule is given below for reference. The work plan schedule shall be prepared covering the tasks of all phases.

#	Task	Skill set	Man-month	Timeline in Months (M)					
				M-1	M-2	M-3			M-n
1									
2									
3									
n									

Signature of the Authorised Signatory of Tender:

Name of Authorised person:

Designation of Authorised person

Name and Address of Bidder:

Stamp of bidder:



## **Request for Proposal (RFP)**

---

### **Civil works relating to construction of Display-cum-demonstration centre at Malliakarai, Salem**

**Tender Ref.: TNHDC/241/DC/22-23**

## **Price Bid (Envelope-C)**

---

**The Tamil Nadu Handicrafts Development Corporation Ltd (TNHDC)**

759 Anna Salai, Chennai – 600 002

Phone:(044) 2852 1271/1325/5094

Fax: (044) 2852 4231

Email: [tamilnaduhandicrafts@yahoo.co.in](mailto:tamilnaduhandicrafts@yahoo.co.in)

**Price Bid (Envelope-C)**

Plinth area of the Building = 392.00 Sqm / 4219.50 Sq.ft									
S.No	DESCRIPTION OF WORK	MEASUREMENTS				QTY	UNIT	RATE	AMOUNT
		NOS	L(m)	B(m)	D(m)				
	<b><u>Building Construction</u></b>								
1	Earth work excavation for foundation, footing, retaining wall upto 1.5 mtr depth below ground level including disposing the earth up to a initial lead of 50 mtrs,the well clear of the foundation including dressing of sides ,ramming of bottom complete as per specification and drawing. The work shall be carried out as per the directions by the Engineer In charge.								
	Up to 1.5 mtr depth below existing ground level in all types of soil								
	For Footing - F1	9	2.40	2.40	2.20	114.048			
	For Footing - F2	6	2.70	2.70	2.20	96.228			
	For Footing - F3	7	3.10	3.10	2.20	147.994			
	For Footing - F4	3	2.10	2.10	2.20	29.106			
	SFC	4	1.30	1.30	2.20	14.872			
	<b><u>Grade Beam</u></b>								
	GB1 / Grid A6-B6	1	6.36	0.45	0.80	2.290			
	GB2 / Grid B6-G6	1	9.48	0.45	0.80	3.413			
	GB3 / Grid G6-J6	1	7.46	0.45	0.88	2.937			
	GB1 / Grid J6-M6	1	9.79	0.45	0.80	3.524			
	GB2 / Grid A5-G5	1	15.84	0.45	0.80	5.702			
	GB3 / Grid G5-J5	1	7.46	0.45	0.88	2.937			
	GB1 / Grid J5-M5	1	9.79	0.45	0.80	3.524			
	GB1 / Grid A2-B2	1	6.36	0.45	0.80	2.290			
	GB2 / Grid B2-K2	1	20.74	0.45	0.80	7.466			
	GB1 / Grid K2-M2	1	2.99	0.45	0.80	1.076			

"Civil works relating to construction of Display-cum-demonstration centre at Malliakarai, Salem"  
-Tender Ref. TNHDC/241/DC/22-23

	GB1 / Grid K1-M1	1	2.99	0.45	0.80	1.076			
	GB4 / Grid J-M	1	9.79	0.45	0.80	3.524			
	GB4 / Grid L-M	1	4.56	0.45	0.80	1.642			
	GB1 / Grid A2-A6	1	12.62	0.45	0.80	4.543			
	GB1 / Grid B2-B5	1	5.46	0.45	0.80	1.966			
	GB3 / Grid B5-B6	1	7.16	0.45	0.88	2.835			
	GB2 / Grid C4-C5	1	3.34	0.45	0.80	1.202			
	GB2 / Grid F4-F5	1	3.34	0.45	0.80	1.202			
	GB2 / Grid H4-H5	1	3.34	0.45	0.80	1.202			
	GB2 / Grid L1-L5	1	6.38	0.45	0.80	2.297			
	GB2 / Grid K1-K5	1	6.38	0.45	0.80	2.297			
	GB2 / Grid M1-M5	1	6.38	0.45	0.80	2.297			
	GB3 / Grid D5-D6	1	7.16	0.45	0.88	2.835			
	GB3 / Grid E5-E6	1	7.16	0.45	0.88	2.835			
	GB3 / Grid G5-G6	1	7.16	0.45	0.88	2.835			
	GB3 / Grid J5-J6	1	7.16	0.45	0.88	2.835			
	GB3 / Grid L5-L6	1	7.16	0.45	0.88	2.835			
	GB3 / Grid M5-M6	1	7.16	0.45	0.88	2.835			
	GB2	1	3.77	0.45	0.80	1.355			
	GB2	1	7.16	0.45	0.80	2.578			
	Steps & Ramp								
	GB2	1	9.94	0.45	0.80	3.578			
	GB2	1	8.83	0.45	0.80	3.179			
	Ramp Side Wall	2	10.95	0.60	0.60	7.884			
	Entrance Step	1	2.00	4.47	0.30	2.680			
	Rear Steps	1	5.00	2.20	0.30	3.300			
	Front Gardening wall	1	14.52	0.45	0.45	2.940			
	<b>Total Qty</b>					<b>502.00</b>	Cum		

<b>2</b>	Earthwork in the Hill areas with Rocks and Boulders including required materials, labour charges, machineries, loading the earth from the site, transportation charges etc., complete and as directed by the Engineer Incharge.	1	47.00	12.00	4.00	<b>2256.000</b>	Cum		
<b>3</b>	Filling in foundation and basement with clean filling M-Sand or River sand (not sea sand) in layers not exceeding 20cm in depth including watering, ramming, consolidating and dressing etc., complete as directed by the Engineer in charge.								
	<b>For Foundations</b>								
	For Footing - F1	9	2.40	2.40	0.10	5.184			
	For Footing - F2	6	2.70	2.70	0.10	4.374			
	For Footing - F3	7	3.10	3.10	0.10	6.727			
	For Footing - F4	3	2.10	2.10	0.10	1.323			
	SFC	4	1.30	1.30	0.10	0.676			
	<b>Grade Beam</b>								
	GB1 / Grid A6-B6	1	6.36	0.45	0.10	0.286			
	GB2 / Grid B6-G6	1	9.48	0.45	0.10	0.427			
	GB3 / Grid G6-J6	1	7.46	0.45	0.10	0.336			
	GB1 / Grid J6-M6	1	9.79	0.45	0.10	0.441			
	GB2 / Grid A5-G5	1	15.84	0.45	0.10	0.713			
	GB3 / Grid G5-J5	1	7.46	0.45	0.10	0.336			
	GB1 / Grid J5-M5	1	9.79	0.45	0.10	0.441			
	GB1 / Grid A2-B2	1	6.36	0.45	0.10	0.286			
	GB2 / Grid B2-K2	1	20.74	0.45	0.10	0.933			
	GB1 / Grid K2-M2	1	2.99	0.45	0.10	0.135			
	GB1 / Grid K1-M1	1	2.99	0.45	0.10	0.135			
	GB4 / Grid J-M	1	9.79	0.45	0.10	0.441			
	GB4 / Grid L-M	1	4.56	0.45	0.10	0.205			

"Civil works relating to construction of Display-cum-demonstration centre at Malliakarai, Salem"  
-Tender Ref. TNHDC/241/DC/22-23

	GB1 / Grid A2-A6	1	12.62	0.45	0.10	0.568			
	GB1 / Grid B2-B5	1	5.46	0.45	0.10	0.246			
	GB3 / Grid B5-B6	1	7.16	0.45	0.10	0.322			
	GB2 / Grid C4-C5	1	3.34	0.45	0.10	0.150			
	GB2 / Grid F4-F5	1	3.34	0.45	0.10	0.150			
	GB2 / Grid H4-H5	1	3.34	0.45	0.10	0.150			
	GB2 / Grid L1-L5	1	6.38	0.45	0.10	0.287			
	GB2 / Grid K1-K5	1	6.38	0.45	0.10	0.287			
	GB2 / Grid M1-M5	1	6.38	0.45	0.10	0.287			
	GB3 / Grid D5-D6	1	7.16	0.45	0.10	0.322			
	GB3 / Grid E5-E6	1	7.16	0.45	0.10	0.322			
	GB3 / Grid G5-G6	1	7.16	0.45	0.10	0.322			
	GB3 / Grid J5-J6	1	7.16	0.45	0.10	0.322			
	GB3 / Grid L5-L6	1	7.16	0.45	0.10	0.322			
	GB3 / Grid M5-M6	1	7.16	0.45	0.10	0.322			
	GB2	1	3.77	0.45	0.10	0.169			
	GB2	1	7.16	0.45	0.10	0.322			
	<b>Steps &amp; Ramp</b>								
	GB2	1	9.94	0.45	0.10	0.447			
	GB2	1	8.83	0.45	0.10	0.397			
	Ramp Side Wall	2	10.95	0.60	0.10	1.314			
	Ramp Flooring	1	10.95	1.53	0.10	1.679			
	Entrance Step	1	2.00	4.47	0.10	0.893			
	Rear Steps	1	5.00	2.20	0.10	1.100			
	Front Gardening wall	1	14.52	0.45	0.10	0.653			
	<b>For Basement</b>								
	Display Cum Demonstration Hall	1	12.39	6.13	0.10	7.594			
	Corridor	1	21.95	3.00	0.10	6.585			
	Stall1,2&3	3	6.93	2.93	0.10	6.091			
	Cafeteria	1	7.23	6.93	0.10	5.010			

"Civil works relating to construction of Display-cum-demonstration centre at Malliakarai, Salem"  
-Tender Ref. TNHDC/241/DC/22-23

	Kitchen. Store & Serving area	1	6.93	5.00	0.10	3.465			
	Toilet area	1	10.38	4.33	0.10	4.495			
	Staircase	1	5.76	2.70	0.10	1.555			
	For Ramp	1	10.95	1.53	0.10	1.679			
	Demonstration - 1	1	2.4	2.4	0.1	0.576			
	Demonstration - 2	1	2.4	2.4	0.1	0.576			
	Display Platform	3	3.3	0.8	0.1	0.792			
						<b>74.00</b>	Cum		
<b>4</b>	Filling the approved borrowed good quality earth in plinths, etc. wherever specified in layers not exceeding 150 mm thick, including breaking of clods, watering, compacting each layer, all leads and lifts, .The rate shall include conveyance of all materials, labours, machinery etc. complete as directed. The work shall be carried out as per the directions by the Engineer In charge. Measurement will be made on the consolidated volume.								
	Display Cum Demonstration Hall	1	12.39	6.13	0.60	45.567			
	Corridor	1	21.95	3.00	0.60	39.510			
	Stall1,2&3	3	6.93	2.93	0.60	36.549			
	Cafeteria	1	7.23	6.93	0.60	30.062			
	Kitchen. Store & Serving area	1	6.93	5.00	0.60	20.790			
	Toilet area	1	10.38	4.33	0.60	26.967			
	Staircase	1	5.76	2.70	0.60	9.331			
	For Ramp	1	10.95	1.53	0.60	10.072			
	Front Gardening wall	1	14.52	2.46	0.60	21.432			
	Demonstration - 1	1	2.4	2.4	0.30	1.728			
	Demonstration - 2	1	2.4	2.4	0.30	1.728			
	Display Platform	3	3.3	0.8	0.30	2.376			
	<b>Total Qty</b>					<b>246.11</b>	Cum		

<b>5</b>	Providing and placing Plain Cement Concrete of 1:4:8 (IS456 ), PCC using River sand and 40 mm down size aggregates including shuttering if required, proper compaction, curing, finishing, roughening to surfaces wherever required etc. as per specification . The rate shall include de watering if necessary. The work shall be carried out as per the directions of the Engineer In charge.							
	<b>For Foundations</b>							
	For Footing - F1	9	2.40	2.40	0.10	5.184		
	For Footing - F2	6	2.70	2.70	0.10	4.374		
	For Footing - F3	7	3.10	3.10	0.10	6.727		
	For Footing - F4	3	2.10	2.10	0.10	1.323		
	SFC	4	1.30	1.30	0.10	0.676		
	<b>Grade Beam</b>							
	GB1 / Grid A6-B6	1	6.36	0.45	0.10	0.286		
	GB2 / Grid B6-G6	1	9.48	0.45	0.10	0.427		
	GB3 / Grid G6-J6	1	7.46	0.45	0.10	0.336		
	GB1 / Grid J6-M6	1	9.79	0.45	0.10	0.441		
	GB2 / Grid A5-G5	1	15.84	0.45	0.10	0.713		
	GB3 / Grid G5-J5	1	7.46	0.45	0.10	0.336		
	GB1 / Grid J5-M5	1	9.79	0.45	0.10	0.441		
	GB1 / Grid A2-B2	1	6.36	0.45	0.10	0.286		
	GB2 / Grid B2-K2	1	20.74	0.45	0.10	0.933		
	GB1 / Grid K2-M2	1	2.99	0.45	0.10	0.135		
	GB1 / Grid K1-M1	1	2.99	0.45	0.10	0.135		
	GB4 / Grid J-M	1	9.79	0.45	0.10	0.441		
	GB4 / Grid L-M	1	4.56	0.45	0.10	0.205		
	GB1 / Grid A2-A6	1	12.62	0.45	0.10	0.568		
	GB1 / Grid B2-B5	1	5.46	0.45	0.10	0.246		
	GB3 / Grid B5-B6	1	7.16	0.45	0.10	0.322		

"Civil works relating to construction of Display-cum-demonstration centre at Malliakarai, Salem"  
-Tender Ref. TNHDC/241/DC/22-23

	GB2 / Grid C4-C5	1	3.34	0.45	0.10	0.150			
	GB2 / Grid F4-F5	1	3.34	0.45	0.10	0.150			
	GB2 / Grid H4-H5	1	3.34	0.45	0.10	0.150			
	GB2 / Grid L1-L5	1	6.38	0.45	0.10	0.287			
	GB2 / Grid K1-K5	1	6.38	0.45	0.10	0.287			
	GB2 / Grid M1-M5	1	6.38	0.45	0.10	0.287			
	GB3 / Grid D5-D6	1	7.16	0.45	0.10	0.322			
	GB3 / Grid E5-E6	1	7.16	0.45	0.10	0.322			
	GB3 / Grid G5-G6	1	7.16	0.45	0.10	0.322			
	GB3 / Grid J5-J6	1	7.16	0.45	0.10	0.322			
	GB3 / Grid L5-L6	1	7.16	0.45	0.10	0.322			
	GB3 / Grid M5-M6	1	7.16	0.45	0.10	0.322			
	GB2	1	3.77	0.45	0.10	0.169			
	GB2	1	7.16	0.45	0.10	0.322			
	Steps & Ramp								
	GB2	1	9.94	0.45	0.10	0.447			
	GB2	1	8.83	0.45	0.10	0.397			
	Ramp Side Wall	2	10.95	0.60	0.10	1.314			
	Ramp Flooring	1	10.95	1.53	0.10	1.679			
	Entrance Step	1	2.00	4.47	0.10	0.893			
	Rear Steps	1	5.00	2.20	0.10	1.100			
	Front Gardening wall	1	14.52	0.45	0.10	0.653			
	<b>For Basement</b>								
	Display Cum Demonstration Hall	1	12.39	6.13	0.10	7.594			
	Corridor	1	21.95	3.00	0.10	6.585			
	Stall1,2&3	3	6.93	2.93	0.10	6.091			
	Cafeteria	1	7.23	6.93	0.10	5.010			
	Kitchen. Store & Serving area	1	6.93	5.00	0.10	3.465			
	Toilet area	1	10.38	4.33	0.10	4.495			
	Staircase	1	5.76	2.70	0.10	1.555			

"Civil works relating to construction of Display-cum-demonstration centre at Malliakarai, Salem"  
-Tender Ref. TNHDC/241/DC/22-23

	For Ramp	1	5.50	1.20	0.10	0.660			
	Landing at front side	1	1.50	1.20	0.10	0.180			
	Landing at Rear Side	1	1.20	1.00	0.10	0.120			
	Demonstration - 1	1	2.4	2.4	0.10	0.576			
	Demonstration - 2	1	2.4	2.4	0.10	0.576			
	Display Platform	3	3.3	0.8	0.10	0.792			
	<b>Total Qty</b>					<b>72.45</b>	Cum		
<b>6</b>	Providing and laying cement concrete of specified grade M30 ( 1: 0.75: 1.5 ) (IS 456) Site mix ,using 20mm and down size granite aggregates and river sand / M sand as per the specification and design for RCC works laid as specified and well compacted vibrating, curing, finishing on exposed surface with necessary cement mortar(1:3) wherever required, the rate shall include all lead and lifts, materials, labor, equipment and machinery, loading and unloading, transportation and all other incidental charges etc., complete. The work shall be carried out as per the directions by the Engineer In charge. (excluding cost of steel and form work charges)								
<b>i</b>	<b>For Footings in M20</b>								
	For Footing - F1	9	2.10	2.10	0.55	21.830			
	For Footing - F2	6	2.40	2.40	0.60	20.736			
	For Footing - F3	7	2.80	2.80	0.675	37.044			
	For Footing - F4	3	1.80	1.80	0.45	4.374			
	SFC	4	1.00	1.00	0.30	1.200			
	<b>Pedestal</b>								
	C1	9	0.50	0.80	0.30	1.080			
	C2	6	0.50	0.80	0.30	0.720			
	C3	7	0.50	0.80	0.30	0.840			
	C4	3	0.50	0.50	0.30	0.225			
	SC	4	0.50	0.50	0.30	0.300			

						<b>88.35</b>			
<b>ii</b>	<b>For Column below Ground Level</b>								
	C1	9	0.30	0.60	1.15	1.863			
	C2	6	0.30	0.60	1.10	1.188			
	C3	7	0.30	0.60	1.03	1.292			
	C4	3	3.14	0.02	1.25	0.265			
	SC	4	0.30	0.30	1.40	0.504			
						<b>5.111</b>			
<b>iii</b>	<b>For Column from GroundLevel to Basement level</b>								
	C1	9	0.30	0.60	0.90	1.458			
	C2	6	0.30	0.60	0.90	0.972			
	C3	7	0.30	0.60	0.90	1.134			
	C4	3	3.14	0.02	0.90	0.191			
	SC	4	0.30	0.30	0.90	0.324			
						<b>4.079</b>			
<b>iv</b>	<b>For Column from GroundLevel to Parapet Level</b>								
	C1	9	0.30	0.60	4.50	7.290			
	C2	6	0.30	0.60	4.50	4.860			
	C3	7	0.30	0.60	4.50	5.670			
	C4	3	3.14	0.02	4.50	0.954			
						<b>18.774</b>			
<b>v</b>	<b>For Grade Beam</b>								
	GB1 / Grid A6-B6	1	6.36	0.23	0.45	0.658			
	GB2 / Grid B6-G6	1	9.48	0.23	0.45	0.981			
	GB3 / Grid G6-J6	1	7.46	0.23	0.525	0.901			

"Civil works relating to construction of Display-cum-demonstration centre at Malliakarai, Salem"  
-Tender Ref. TNHDC/241/DC/22-23

	GB1 / Grid J6-M6	1	9.79	0.23	0.45	1.013			
	GB2 / Grid A5-G5	1	15.84	0.23	0.45	1.639			
	GB3 / Grid G5-J5	1	7.46	0.23	0.525	0.901			
	GB1 / Grid J5-M5	1	9.79	0.23	0.45	1.013			
	GB1 / Grid A2-B2	1	6.36	0.23	0.45	0.658			
	GB2 / Grid B4-K4	1	20.74	0.23	0.45	2.147			
	GB1 / Grid K3-M3	1	5.99	0.23	0.45	0.620			
	GB1 / Grid K1-M1	1	5.99	0.23	0.45	0.620			
	GB4 / Grid J-M	1	9.79	0.23	0.45	1.013			
	GB4 / Grid L-M	1	4.56	0.23	0.45	0.472			
	GB1 / Grid A2-A6	1	12.62	0.23	0.45	1.306			
	GB1 / Grid B2-B5	1	5.46	0.23	0.45	0.565			
	GB3 / Grid B5-B6	1	7.16	0.23	0.525	0.865			
	GB2 / Grid C4-C5	1	3.34	0.23	0.45	0.346			
	GB2 / Grid F4-F5	1	3.34	0.23	0.45	0.346			
	GB2 / Grid H4-H5	1	3.34	0.23	0.45	0.346			
	GB2 / Grid L1-L5	1	6.38	0.23	0.45	0.660			
	GB2 / Grid K1-K5	1	6.38	0.23	0.45	0.660			
	GB2 / Grid M1-M5	1	6.38	0.23	0.45	0.660			
	GB3 / Grid D5-D6	1	7.16	0.23	0.525	0.865			
	GB3 / Grid E5-E6	1	7.16	0.23	0.525	0.865			
	GB3 / Grid G5-G6	1	7.16	0.23	0.525	0.865			
	GB3 / Grid J5-J6	1	7.16	0.23	0.525	0.865			
	GB3 / Grid L5-L6	1	7.16	0.23	0.525	0.865			
	GB3 / Grid M5-M6	1	7.16	0.23	0.525	0.865			
	GB2	1	3.77	0.23	0.45	0.390			
	GB2	1	7.16	0.23	0.45	0.741			
	<b>Steps &amp; Ramp</b>								
	GB2	1	9.94	0.23	0.45	1.029			

"Civil works relating to construction of Display-cum-demonstration centre at Malliakarai, Salem"  
-Tender Ref. TNHDC/241/DC/22-23

	GB2	1	8.83	0.23	0.45	0.914			
						<b>26.652</b>			
<b>vi</b>	<b>Flooring Slab 100mm tk</b>								
	Display Cum Demonstration Hall	1	12.39	6.13	0.1	7.594			
	Corridor	1	21.95	3.00	0.1	6.585			
	Stall1,2&3	3	6.93	2.93	0.1	6.091			
	Cafeteria	1	7.23	6.93	0.1	5.010			
	Kitchen. Store & Serving area	1	6.93	5.00	0.1	3.465			
	Toilet area	1	10.38	4.33	0.1	4.495			
	Staircase	1	5.76	2.70	0.1	1.555			
						<b>34.796</b>			
<b>vii</b>	<b>Plinth Beam 0.23mx0.12m</b>								
	PB1 / Grid A6-B6	1	6.36	0.23	0.12	0.176			
	PB2 / Grid B6-G6	1	9.48	0.23	0.12	0.262			
	PB3 / Grid G6-J6	1	7.46	0.23	0.12	0.206			
	PB1 / Grid J6-M6	1	9.79	0.23	0.12	0.270			
	PB2 / Grid A5-G5	1	15.84	0.23	0.12	0.437			
	PB3 / Grid G5-J5	1	7.46	0.23	0.12	0.206			
	PB1 / Grid J5-M5	1	9.79	0.23	0.12	0.270			
	PB1 / Grid A2-B2	1	6.36	0.23	0.12	0.176			
	PB2 / Grid B4-K4	1	20.74	0.23	0.12	0.572			
	PB1 / Grid K3-M3	1	5.99	0.23	0.12	0.165			
	PB1 / Grid K1-M1	1	5.99	0.23	0.12	0.165			
	PB4 / Grid J-M	1	9.79	0.23	0.12	0.270			
	PB4 / Grid L-M	1	4.56	0.23	0.12	0.126			
	PB1 / Grid A2-A6	1	12.62	0.23	0.12	0.348			
	PB1 / Grid B2-B5	1	5.46	0.23	0.12	0.151			
	PB3 / Grid B5-B6	1	7.16	0.23	0.12	0.198			

"Civil works relating to construction of Display-cum-demonstration centre at Malliakarai, Salem"  
-Tender Ref. TNHDC/241/DC/22-23

	PB2 / Grid C4-C5	1	3.34	0.23	0.12	0.092			
	PB2 / Grid F4-F5	1	3.34	0.23	0.12	0.092			
	PB2 / Grid H4-H5	1	3.34	0.23	0.12	0.092			
	PB2 / Grid L1-L5	1	6.38	0.23	0.12	0.176			
	PB2 / Grid K1-K5	1	6.38	0.23	0.12	0.176			
	PB2 / Grid M1-M5	1	6.38	0.23	0.12	0.176			
	PB3 / Grid D5-D6	1	7.16	0.23	0.12	0.198			
	PB3 / Grid E5-E6	1	7.16	0.23	0.12	0.198			
	PB3 / Grid G5-G6	1	7.16	0.23	0.12	0.198			
	PB3 / Grid J5-J6	1	7.16	0.23	0.12	0.198			
	PB3 / Grid L5-L6	1	7.16	0.23	0.12	0.198			
	PB3 / Grid M5-M6	1	7.16	0.23	0.12	0.198			
	PB2	1	3.77	0.23	0.12	0.104			
	PB2	1	7.16	0.23	0.12	0.198			
						<b>6.29</b>			
<b>vii</b>	<b>Sill slab</b>								
	W1	1	4.42	0.23	0.075	0.076			
	W2	6	1.2	0.23	0.075	0.124			
	W3	2	1.8	0.23	0.075	0.062			
	W4	2	0.9	0.23	0.075	0.031			
						<b>0.29</b>			
<b>viii</b>	<b>For Lintel Beam</b>								
	LB1 / Grid A6-B6	1	6.36	0.23	0.225	0.329			
	LB2 / Grid B6-G6	1	9.48	0.23	0.225	0.491			
	LB3 / Grid G6-J6	1	7.46	0.23	0.225	0.386			
	LB1 / Grid J6-M6	1	9.79	0.23	0.225	0.507			
	LB2 / Grid A5-G5	1	15.84	0.23	0.225	0.820			
	LB3 / Grid G5-J5	1	7.46	0.23	0.225	0.386			
	LB1 / Grid J5-M5	1	9.79	0.23	0.225	0.507			

"Civil works relating to construction of Display-cum-demonstration centre at Malliakarai, Salem"  
-Tender Ref. TNHDC/241/DC/22-23

	LB1 / Grid A2-B2	1	6.36	0.23	0.225	0.329			
	LB2 / Grid B4-K4	1	20.74	0.23	0.225	1.073			
	LB1 / Grid K3-M3	1	5.99	0.23	0.225	0.310			
	LB1 / Grid K1-M1	1	5.99	0.23	0.225	0.310			
	LB4 / Grid J-M	1	9.79	0.23	0.225	0.507			
	LB4 / Grid L-M	1	4.56	0.23	0.225	0.236			
	LB1 / Grid A2-A6	1	12.62	0.23	0.225	0.653			
	LB1 / Grid B2-B5	1	5.46	0.23	0.225	0.283			
	LB3 / Grid B5-B6	1	7.16	0.23	0.225	0.371			
	LB2 / Grid C4-C5	1	3.34	0.23	0.225	0.173			
	LB2 / Grid F4-F5	1	3.34	0.23	0.225	0.173			
	LB2 / Grid H4-H5	1	3.34	0.23	0.225	0.173			
	LB2 / Grid L1-L5	1	6.38	0.23	0.225	0.330			
	LB2 / Grid K1-K5	1	6.38	0.23	0.225	0.330			
	LB2 / Grid M1-M5	1	6.38	0.23	0.225	0.330			
	LB3 / Grid D5-D6	1	7.16	0.23	0.225	0.371			
	LB3 / Grid E5-E6	1	7.16	0.23	0.225	0.371			
	LB3 / Grid G5-G6	1	7.16	0.23	0.225	0.371			
	LB3 / Grid J5-J6	1	7.16	0.23	0.225	0.371			
	LB3 / Grid L5-L6	1	7.16	0.23	0.225	0.371			
	LB3 / Grid M5-M6	1	7.16	0.23	0.225	0.371			
	Toilet Partition Lintel Beam	1	13.50	0.115	0.225	0.349			
						<b>11.58</b>			
<b>viii</b>	<b>For Sunshade</b>								
	W1	1	6.818	0.6	0.08	0.327			
	W2	6	1.66	0.6	0.08	0.478			
	W3	2	2.26	0.6	0.08	0.217			
	W4	2	1.36	0.6	0.08	0.131			
	D2	1	1.36	0.6	0.08	0.065			

						<b>1.22</b>			
<b>vi</b>	<b>For Roof Beam</b>								
	GRB1 / Grid A6-B6	1	6.36	0.23	0.6	0.878			
	GRB2 / Grid B6-G6	1	9.48	0.23	0.45	0.981			
	GRB3 / Grid G6-J6	1	7.46	0.23	0.6	1.029			
	GRB1 / Grid J6-M6	1	9.79	0.23	0.6	1.351			
	GRB1 / Grid A5-B5	1	6.36	0.23	0.6	0.878			
	GRB2 / Grid B5-G5	1	9.48	0.23	0.45	0.981			
	GRB3 / Grid G5-J5	1	7.46	0.23	0.6	1.029			
	GRB1 / Grid J5-M5	1	9.79	0.23	0.45	1.013			
	GRB1 / Grid A2-B2	1	6.36	0.23	0.45	0.658			
	GRB6 / Grid B4-K4	1	20.74	0.23	0.6	2.862			
	GRB5 / Grid K3-M3	1	5.99	0.23	0.6	0.827			
	GRB1 / Grid K1-M1	1	5.99	0.23	0.6	0.827			
	GRB4 / Grid J-L	1	5.23	0.23	0.6	0.722			
	GRB1 / Grid A2-A6	1	12.62	0.23	0.6	1.742			
	GRB1 / Grid B2-B5	1	5.46	0.23	0.6	0.753			
	GRB3 / Grid B5-B6	1	7.16	0.23	0.6	0.988			
	GRB8 / Grid C4-C5	1	3.34	0.23	0.45	0.346			
	GRB8 / Grid F4-F5	1	3.34	0.23	0.45	0.346			
	GRB8 / Grid H4-H5	1	3.34	0.23	0.45	0.346			
	GRB8 / Grid L3-L5	1	3.34	0.23	0.45	0.346			
	GRB2 / Grid L1-L3	1	2.93	0.23	0.45	0.303			
	GRB2 / Grid M1-M5	1	6.38	0.23	0.45	0.660			
	GRB3 / Grid M5-M6	1	7.16	0.23	0.6	0.988			
	GRB3 / Grid D5-D6	1	7.16	0.23	0.6	0.988			
	GRB3 / Grid E5-E6	1	7.16	0.23	0.6	0.988			
	GRB3 / Grid G5-G6	1	7.16	0.23	0.6	0.988			
	GRB3 / Grid J5-J6	1	7.16	0.23	0.6	0.988			

"Civil works relating to construction of Display-cum-demonstration centre at Malliakarai, Salem"  
-Tender Ref. TNHDC/241/DC/22-23

	GRB3 / Grid L5-L6	1	7.16	0.23	0.6	0.988			
	GRB7	1	7.16	0.23	0.6	0.988			
	Staircase Beam - Midlanding & Landing	2	3.20	0.23	0.45	0.662			
	Headroom Beam HB1 / Grid K-M	2	5.99	0.23	0.6	1.653			
	Headroom Beam HB2 / Grid 1-3	2	2.93	0.23	0.45	0.607			
						<b>29.70</b>			
<b>xi</b>	<b>For Roof slab</b>								
	S1	3	7.16	3.16	0.130	8.824			
		1	3.34	1.95	0.130	0.845			
		1	6.60	3.34	0.130	2.866			
		1	6.04	3.34	0.130	2.620			
		1	7.59	3.34	0.130	3.296			
		1	4.56	3.45	0.130	2.045			
	S2	1	7.16	3.77	0.150	4.044			
		1	7.16	3.70	0.150	3.968			
	S3	1	7.16	6.36	0.185	8.424			
		1	6.36	5.46	0.185	6.424			
	S4	1	7.16	4.56	0.150	4.897			
	Headroom Slab S1	1	5.99	2.93	0.130	2.282			
	Staircase waist slab	2	3.70	1.350	0.165	1.648			
	Landing	1	2.70	1.200	0.165	0.535			
						<b>52.718</b>			
	<b>Total Qty</b>					<b>280.00</b>	Cum		

<b>7</b>	<b>REINFORCEMENT WORKS</b>							
	Providing , fabricating and erecting Reinforcement Steel of high yield strength torsteel bars of various diameters and Fe 500D grade for reinforced concrete work. The work includes straightening, cutting, bending, lapping, hooking, welding and placing in position, tying with double strand 18 gauge annealed binding wire and anchoring with adjoining members wherever necessary including all laps, pins & chairs etc. complete as per design ,drawing and specification. The rate also includes cost of labour, binding wire, all necessary materials, equipment and machinery, all lead and lift at all levels, loading and unloading, transportation and all other incidental charges, etc, complete. The work shall be carried out as per the directions by the Engineer In charge.							
	<b>Total Qty</b>				<b>34,865.00</b>	<b>Kg</b>		
<b>8</b>	<b>FORMWORK</b>							
	Providing, form work of centering and shuttering at all levels and places wherever needed / specified as per drawing, including deshuttering with Steel and 12mm thick film coated Ply board if required and with adjustable steel props to full height without joints and with sufficient bracing. Cost to include sealing the joints with heavy duty brown self adhesive tape, aligning to line and levels including providing M.S. Ties, PVC or C C cover blocks etc., complete. The work shall be carried out as per the directions of the Engineer In charge of the work .							
<b>i</b>	<b>For Footings</b>							
	For Footing - F1	9	8.40		0.55	41.580		
	For Footing - F2	6	9.60		0.60	34.560		
	For Footing - F3	7	11.20		0.675	52.920		
	For Footing - F4	3	7.20		0.45	9.720		

	SFC	4	4.00		0.30	4.800			
	<b>Pedestal</b>								
	C1	9	2.60		0.30	7.020			
	C2	6	2.60		0.30	4.680			
	C3	7	2.60		0.30	5.460			
	C4	3	1.00		0.30	0.900			
	SC	4	1.00		0.30	1.200			
						<b>162.84</b>			
<b>ii</b>	<b>For Column below Ground Level</b>								
	C1	9	1.80		1.15	18.630			
	C2	6	1.80		1.10	11.880			
	C3	7	1.80		1.03	12.915			
	C4	3	3.14	0.30	1.25	3.533			
	SC	4	1.20		1.40	6.720			
						<b>53.678</b>			
<b>iii</b>	<b>For Column from GroundLevel to Basement level</b>								
	C1	9	1.80		0.90	14.580			
	C2	6	1.80		0.90	9.720			
	C3	7	1.80		0.90	11.340			
	C4	3	3.14	0.30	0.90	2.543			
	SC	4	1.20		0.90	4.320			
						<b>42.503</b>			
<b>iv</b>	<b>For Column from GroundLevel to Parapet Level</b>								
	C1	9	1.80		4.50	72.900			
	C2	6	1.80		4.50	48.600			
	C3	7	1.80		4.50	56.700			

"Civil works relating to construction of Display-cum-demonstration centre at Malliakarai, Salem"  
-Tender Ref. TNHDC/241/DC/22-23

	C4	3	3.14	0.30	4.50	12.717			
	SC	4	1.20		4.50	21.600			
						<b>212.517</b>			
<b>v</b>	<b>For Grade Beam</b>								
	GB1 / Grid A6-B6	2	6.36		0.45	5.724			
	GB2 / Grid B6-G6	2	9.48		0.45	8.532			
	GB3 / Grid G6-J6	2	7.46		0.525	7.833			
	GB1 / Grid J6-M6	2	9.79		0.45	8.811			
	GB2 / Grid A5-G5	2	15.84		0.45	14.256			
	GB3 / Grid G5-J5	2	7.46		0.525	7.833			
	GB1 / Grid J5-M5	2	9.79		0.45	8.811			
	GB1 / Grid A2-B2	2	6.36		0.45	5.724			
	GB2 / Grid B4-K4	2	20.74		0.45	18.666			
	GB1 / Grid K3-M3	2	5.99		0.45	5.391			
	GB1 / Grid K1-M1	2	5.99		0.45	5.391			
	GB4 / Grid J-M	2	9.79		0.45	8.811			
	GB4 / Grid L-M	2	4.56		0.45	4.104			
		2							
	GB1 / Grid A2-A6	2	12.62		0.45	11.358			
	GB1 / Grid B2-B5	2	5.46		0.45	4.914			
	GB3 / Grid B5-B6	2	7.16		0.525	7.518			
	GB2 / Grid C4-C5	2	3.34		0.45	3.006			
	GB2 / Grid F4-F5	2	3.34		0.45	3.006			
	GB2 / Grid H4-H5	2	3.34		0.45	3.006			
	GB2 / Grid L1-L5	2	6.38		0.45	5.742			
	GB2 / Grid K1-K5	2	6.38		0.45	5.742			
	GB2 / Grid M1-M5	2	6.38		0.45	5.742			
	GB3 / Grid D5-D6	2	7.16		0.525	7.518			
	GB3 / Grid E5-E6	2	7.16		0.525	7.518			

"Civil works relating to construction of Display-cum-demonstration centre at Malliakarai, Salem"  
-Tender Ref. TNHDC/241/DC/22-23

	GB3 / Grid G5-G6	2	7.16		0.525	7.518			
	GB3 / Grid J5-J6	2	7.16		0.525	7.518			
	GB3 / Grid L5-L6	2	7.16		0.525	7.518			
	GB3 / Grid M5-M6	2	7.16		0.525	7.518			
	GB2	2	3.77		0.45	3.389			
	GB2	2	7.16		0.45	6.444			
	<b>Steps &amp; Ramp</b>								
	GB2	2	9.94		0.45	8.946			
	GB2	2	8.83		0.45	7.947			
						<b>231.755</b>			
<b>vi</b>	<b>Flooring Slab 100mm tk</b>								
	Display Cum Demonstration Hall	1	37.04		0.1	3.704			
	Corridor	1	49.90		0.1	4.990			
	Stall1,2&3	3	19.72		0.1	5.916			
	Cafeteria	1	28.32		0.1	2.832			
	Kitchen, Store & Serving area	1	23.86		0.1	2.386			
	Toilet area	1	29.42		0.1	2.942			
	Staircase	1	16.92		0.1	1.692			
						<b>24.462</b>			
<b>vii</b>	<b>Plinth Beam 0.23mx0.12m</b>								
	PB1 / Grid A6-B6	2	6.36		0.12	1.526			
	PB2 / Grid B6-G6	2	9.48		0.12	2.275			
	PB3 / Grid G6-J6	2	7.46		0.12	1.790			
	PB1 / Grid J6-M6	2	9.79		0.12	2.350			
	PB2 / Grid A5-G5	2	15.84		0.12	3.802			
	PB3 / Grid G5-J5	2	7.46		0.12	1.790			
	PB1 / Grid J5-M5	2	9.79		0.12	2.350			
	PB1 / Grid A2-B2	2	6.36		0.12	1.526			
	PB2 / Grid B4-K4	2	20.74		0.12	4.978			

"Civil works relating to construction of Display-cum-demonstration centre at Malliakarai, Salem"  
-Tender Ref. TNHDC/241/DC/22-23

	PB1 / Grid K3-M3	2	5.99		0.12	1.438			
	PB1 / Grid K1-M1	2	5.99		0.12	1.438			
	PB4 / Grid J-M	2	9.79		0.12	2.350			
	PB4 / Grid L-M	2	4.56		0.12	1.094			
	PB1 / Grid A2-A6	2	12.62		0.12	3.029			
	PB1 / Grid B2-B5	2	5.46		0.12	1.310			
	PB3 / Grid B5-B6	2	7.16		0.12	1.718			
	PB2 / Grid C4-C5	2	3.34		0.12	0.802			
	PB2 / Grid F4-F5	2	3.34		0.12	0.802			
	PB2 / Grid H4-H5	2	3.34		0.12	0.802			
	PB2 / Grid L1-L5	2	6.38		0.12	1.531			
	PB2 / Grid K1-K5	2	6.38		0.12	1.531			
	PB2 / Grid M1-M5	2	6.38		0.12	1.531			
	PB3 / Grid D5-D6	2	7.16		0.12	1.718			
	PB3 / Grid E5-E6	2	7.16		0.12	1.718			
	PB3 / Grid G5-G6	2	7.16		0.12	1.718			
	PB3 / Grid J5-J6	2	7.16		0.12	1.718			
	PB3 / Grid L5-L6	2	7.16		0.12	1.718			
	PB3 / Grid M5-M6	2	7.16		0.12	1.718			
	PB2	2	3.77		0.12	0.904			
	PB2	2	7.16		0.12	1.718			
						<b>54.69</b>			
<b>vii</b>	<b>Sill slab</b>								
	W1	2	4.42		0.075	0.663			
	W2	12	1.2		0.075	1.080			
	W3	4	1.8		0.075	0.540			
	W4	4	0.9		0.075	0.270			
						<b>2.55</b>			

<b>viii</b>	<b>For Lintel Beam</b>								
	<b>Sides</b>								
	LB1 / Grid A6-B6	2	6.36		0.225	2.862			
	LB2 / Grid B6-G6	2	9.48		0.225	4.266			
	LB3 / Grid G6-J6	2	7.46		0.225	3.357			
	LB1 / Grid J6-M6	2	9.79		0.225	4.406			
	LB2 / Grid A5-G5	2	15.84		0.225	7.128			
	LB3 / Grid G5-J5	2	7.46		0.225	3.357			
	LB1 / Grid J5-M5	2	9.79		0.225	4.406			
	LB1 / Grid A2-B2	2	6.36		0.225	2.862			
	LB2 / Grid B4-K4	2	20.74		0.225	9.333			
	LB1 / Grid K3-M3	2	5.99		0.225	2.696			
	LB1 / Grid K1-M1	2	5.99		0.225	2.696			
	LB4 / Grid J-M	2	9.79		0.225	4.406			
	LB4 / Grid L-M	2	4.56		0.225	2.052			
	LB1 / Grid A2-A6	2	12.62		0.225	5.679			
	LB1 / Grid B2-B5	2	5.46		0.225	2.457			
	LB3 / Grid B5-B6	2	7.16		0.225	3.222			
	LB2 / Grid C4-C5	2	3.34		0.225	1.503			
	LB2 / Grid F4-F5	2	3.34		0.225	1.503			
	LB2 / Grid H4-H5	2	3.34		0.225	1.503			
	LB2 / Grid L1-L5	2	6.38		0.225	2.871			
	LB2 / Grid K1-K5	2	6.38		0.225	2.871			
	LB2 / Grid M1-M5	2	6.38		0.225	2.871			
	LB3 / Grid D5-D6	2	7.16		0.225	3.222			
	LB3 / Grid E5-E6	2	7.16		0.225	3.222			
	LB3 / Grid G5-G6	2	7.16		0.225	3.222			
	LB3 / Grid J5-J6	2	7.16		0.225	3.222			
	LB3 / Grid L5-L6	2	7.16		0.225	3.222			

"Civil works relating to construction of Display-cum-demonstration centre at Malliakarai, Salem"  
-Tender Ref. TNHDC/241/DC/22-23

LB3 / Grid M5-M6	2	7.16		0.225	3.222			
<b>Bottom</b>								
LB1 / Grid A6-B6	1	6.36	0.23		1.463			
LB2 / Grid B6-G6	1	9.48	0.23		2.180			
LB3 / Grid G6-J6	1	7.46	0.23		1.716			
LB1 / Grid J6-M6	1	9.79	0.23		2.252			
LB2 / Grid A5-G5	1	15.84	0.23		3.643			
LB3 / Grid G5-J5	1	7.46	0.23		1.716			
LB1 / Grid J5-M5	1	9.79	0.23		2.252			
LB1 / Grid A2-B2	1	6.36	0.23		1.463			
LB2 / Grid B4-K4	1	20.74	0.23		4.770			
LB1 / Grid K3-M3	1	5.99	0.23		1.378			
LB1 / Grid K1-M1	1	5.99	0.23		1.378			
LB4 / Grid J-M	1	9.79	0.23		2.252			
LB4 / Grid L-M	1	4.56	0.23		1.049			
LB1 / Grid A2-A6	1	12.62	0.23		2.903			
LB1 / Grid B2-B5	1	5.46	0.23		1.256			
LB3 / Grid B5-B6	1	7.16	0.23		1.647			
LB2 / Grid C4-C5	1	3.34	0.23		0.768			
LB2 / Grid F4-F5	1	3.34	0.23		0.768			
LB2 / Grid H4-H5	1	3.34	0.23		0.768			
LB2 / Grid L1-L5	1	6.38	0.23		1.467			
LB2 / Grid K1-K5	1	6.38	0.23		1.467			
LB2 / Grid M1-M5	1	6.38	0.23		1.467			
LB3 / Grid D5-D6	1	7.16	0.23		1.647			
LB3 / Grid E5-E6	1	7.16	0.23		1.647			
LB3 / Grid G5-G6	1	7.16	0.23		1.647			
LB3 / Grid J5-J6	1	7.16	0.23		1.647			
LB3 / Grid L5-L6	1	7.16	0.23		1.647			

	LB3 / Grid M5-M6	1	7.16	0.23		1.647			
	Partition Toilet Lintel - Sides	2	13.50		0.225	6.075			
	Partition Toilet Lintel - Bottom	1	13.50	0.115		1.553			
						<b>155.17</b>			
<b>viii</b>	<b>For Sunshade</b>								
	<u>Sides</u>								
	W1	1	8.018		0.10	0.802			
	W2	6	2.86		0.10	1.716			
	W3	2	3.46		0.10	0.692			
	W4	2	2.56		0.10	0.512			
	D2	1	2.56		0.10	0.256			
	<u>Bottom</u>								
	W1	1	6.818	0.6		4.091			
	W2	6	1.66	0.6		5.976			
	W3	2	2.26	0.6		2.712			
	W4	2	1.36	0.6		1.632			
	D2	1	1.36	0.6		0.816			
						<b>19.20</b>			
<b>vi</b>	<b>For Roof Beam</b>								
	<u>Sides</u>								
	GRB1 / Grid A6-B6	2	6.36		0.6	7.632			
	GRB2 / Grid B6-G6	2	9.48		0.45	8.532			
	GRB3 / Grid G6-J6	2	7.46		0.6	8.952			
	GRB1 / Grid J6-M6	2	9.79		0.6	11.748			
	GRB1 / Grid A5-B5	2	6.36		0.6	7.632			
	GRB2 / Grid B5-G5	2	9.48		0.45	8.532			
	GRB3 / Grid G5-J5	2	7.46		0.6	8.952			
	GRB1 / Grid J5-M5	2	9.79		0.45	8.811			
	GRB1 / Grid A2-B2	2	6.36		0.45	5.724			
	GRB6 / Grid B4-K4	2	20.74		0.6	24.888			

"Civil works relating to construction of Display-cum-demonstration centre at Malliakarai, Salem"  
-Tender Ref. TNHDC/241/DC/22-23

	GRB5 / Grid K3-M3	2	5.99		0.6	7.188			
	GRB1 / Grid K1-M1	2	5.99		0.6	7.188			
	GRB4 / Grid J-L	2	5.23		0.6	6.276			
	GRB1 / Grid A2-A6	2	12.62		0.6	15.144			
	GRB1 / Grid B2-B5	2	5.46		0.6	6.552			
	GRB3 / Grid B5-B6	2	7.16		0.6	8.592			
	GRB8 / Grid C4-C5	2	3.34		0.45	3.006			
	GRB8 / Grid F4-F5	2	3.34		0.45	3.006			
	GRB8 / Grid H4-H5	2	3.34		0.45	3.006			
	GRB8 / Grid L3-L5	2	3.34		0.45	3.006			
	GRB2 / Grid L1-L3	2	2.93		0.45	2.637			
	GRB2 / Grid M1-M5	2	6.38		0.45	5.742			
	GRB3 / Grid M5-M6	2	7.16		0.6	8.592			
	GRB3 / Grid D5-D6	2	7.16		0.6	8.592			
	GRB3 / Grid E5-E6	2	7.16		0.6	8.592			
	GRB3 / Grid G5-G6	2	7.16		0.6	8.592			
	GRB3 / Grid J5-J6	2	7.16		0.6	8.592			
	GRB3 / Grid L5-L6	2	7.16		0.6	8.592			
	GRB7	2	7.16		0.6	8.592			
	Staircase Beam - Midlanding & Landing	4	3.20		0.45	5.760			
	Headroom Beam HB1 / Grid K-M	4	5.99		0.6	14.376			
	Headroom Beam HB2 / Grid 1-3	4	2.93		0.45	5.274			
	<b>Bottom</b>								
	GRB1 / Grid A6-B6	1	6.36	0.23		1.463			
	GRB2 / Grid B6-G6	1	9.48	0.23		2.180			
	GRB3 / Grid G6-J6	1	7.46	0.23		1.716			
	GRB1 / Grid J6-M6	1	9.79	0.23		2.252			
	GRB1 / Grid A5-B5	1	6.36	0.23		1.463			
	GRB2 / Grid B5-G5	1	9.48	0.23		2.180			

"Civil works relating to construction of Display-cum-demonstration centre at Malliakarai, Salem"  
-Tender Ref. TNHDC/241/DC/22-23

	GRB3 / Grid G5-J5	1	7.46	0.23	1.716			
	GRB1 / Grid J5-M5	1	9.79	0.23	2.252			
	GRB1 / Grid A2-B2	1	6.36	0.23	1.463			
	GRB6 / Grid B4-K4	1	20.74	0.23	4.770			
	GRB5 / Grid K3-M3	1	5.99	0.23	1.378			
	GRB1 / Grid K1-M1	1	5.99	0.23	1.378			
	GRB4 / Grid J-L	1	5.23	0.23	1.203			
					0.000			
	GRB1 / Grid A2-A6	1	12.62	0.23	2.903			
	GRB1 / Grid B2-B5	1	5.46	0.23	1.256			
	GRB3 / Grid B5-B6	1	7.16	0.23	1.647			
	GRB8 / Grid C4-C5	1	3.34	0.23	0.768			
	GRB8 / Grid F4-F5	1	3.34	0.23	0.768			
	GRB8 / Grid H4-H5	1	3.34	0.23	0.768			
	GRB8 / Grid L3-L5	1	3.34	0.23	0.768			
	GRB2 / Grid L1-L3	1	2.93	0.23	0.674			
	GRB2 / Grid M1-M5	1	6.38	0.23	1.467			
	GRB3 / Grid M5-M6	1	7.16	0.23	1.647			
	GRB3 / Grid D5-D6	1	7.16	0.23	1.647			
	GRB3 / Grid E5-E6	1	7.16	0.23	1.647			
	GRB3 / Grid G5-G6	1	7.16	0.23	1.647			
	GRB3 / Grid J5-J6	1	7.16	0.23	1.647			
	GRB3 / Grid L5-L6	1	7.16	0.23	1.647			
	GRB7	1	7.16	0.23	1.647			
	Staircase Beam - Midlanding & Landing	2	3.20	0.23	1.472			
	Headroom Beam HB1 / Grid K-M	2	5.99	0.23	2.755			
	Headroom Beam HB2 / Grid 1-3	2	2.93	0.23	1.348			
					<b>311.83</b>			
<b>xi</b>	<b>For Roof slab</b>							
	S1	3	7.16	3.16	67.877			

"Civil works relating to construction of Display-cum-demonstration centre at Malliakarai, Salem"  
-Tender Ref. TNHDC/241/DC/22-23

		1	3.34	1.95		6.496			
		1	6.60	3.34		22.044			
		1	6.04	3.34		20.157			
		1	7.59	3.34		25.351			
		1	4.56	3.45		15.732			
	S2	1	7.16	3.77		26.957			
		1	7.16	3.70		26.456			
	S3	1	7.16	6.36		45.538			
		1	6.36	5.46		34.726			
	S4	1	7.16	4.56		32.650			
	Headroom Slab S1	1	5.99	2.93		17.551			
	Staircase waist slab	2	3.70	1.350		9.990			
	Landing	1	2.70	1.200		3.240			
						<b>354.76</b>			
	<b>Total Qty</b>					<b>1626.00</b>	Sqm		
<b>9</b>	Providing and constructing Brickwork of 230 mm and above thickness using well burnt first quality bricks in cement mortar 1:5 including scaffolding, curing, simultaneous pointing wherever required below ground level and raking out joints above ground level complete as per specifications and drawings In foundation and basement upto plinth including steps and In superstructure above plinth at all elevations.								
	<b>Up to Basement Lvl</b>								
	Grid A6-B6	1	6.36	0.23	0.8	1.170			
	Grid B6-G6	1	9.48	0.23	0.8	1.744			
	Grid G6-J6	1	7.46	0.23	0.8	1.373			
	Grid J6-M6	1	9.79	0.23	0.8	1.801			
	Grid A5-G5	1	15.84	0.23	0.8	2.915			
	Grid G5-J5	1	7.46	0.23	0.8	1.373			
	Grid J5-M5	1	9.79	0.23	0.8	1.801			

"Civil works relating to construction of Display-cum-demonstration centre at Malliakarai, Salem"  
-Tender Ref. TNHDC/241/DC/22-23

	Grid A2-B2	1	6.36	0.23	0.8	1.170			
	Grid B2-K2	1	20.74	0.23	0.8	3.816			
	Grid K2-M2	1	2.99	0.23	0.8	0.550			
	Grid K1-M1	1	2.99	0.23	0.8	0.550			
	Grid J-M	1	9.79	0.23	0.8	1.801			
	Grid L-M	1	4.56	0.23	0.8	0.839			
	Grid A2-A6	1	12.62	0.23	0.8	2.322			
	Grid B2-B5	1	5.46	0.23	0.8	1.005			
	Grid B5-B6	1	7.16	0.23	0.8	1.317			
	Grid C4-C5	1	3.34	0.23	0.8	0.615			
	Grid F4-F5	1	3.34	0.23	0.8	0.615			
	Grid H4-H5	1	3.34	0.23	0.8	0.615			
	Grid L1-L5	1	6.38	0.23	0.8	1.174			
	Grid K1-K5	1	6.38	0.23	0.8	1.174			
	Grid M1-M5	1	6.38	0.23	0.8	1.174			
	Grid D5-D6	1	7.16	0.23	0.8	1.317			
	Grid E5-E6	1	7.16	0.23	0.8	1.317			
	Grid G5-G6	1	7.16	0.23	0.8	1.317			
	Grid J5-J6	1	7.16	0.23	0.8	1.317			
	Grid L5-L6	1	7.16	0.23	0.8	1.317			
	Grid M5-M6	1	7.16	0.23	0.8	1.317			
		1	3.77	0.23	0.8	0.693			
		1	7.16	0.23	0.8	1.317			
	Steps & Ramp	1	9.94	0.23	0.8	1.829			
		1	8.83	0.23	0.8	1.625			
	<b>Above Basement Lvl</b>								
	Display Cum Demonstration Hall	2	18.52	0.23	3.35	28.539			
	Corridor	1	21.95	0.23	2.15	10.854			
	Stall 1	1	12.79	0.23	3.35	9.855			

"Civil works relating to construction of Display-cum-demonstration centre at Malliakarai, Salem"  
-Tender Ref. TNHDC/241/DC/22-23

	Stall 2	1	12.79	0.23	3.35	9.855			
	Stall 3	1	12.79	0.23	3.35	9.855			
	Cafeteria	1	21.39	0.23	3.35	16.481			
	Kitchen	2	5.00	0.23	3.35	7.705			
	Store	2	1.83	0.23	3.35	2.820			
	Serving area	1	6.80	0.23	3.35	5.239			
	Toilet area	2	14.71	0.23	3.35	22.668			
	Staircase	1	5.76	0.23	3.35	4.438			
		2	2.7	0.23	3.35	4.161			
	Headroom	2	5.76	0.23	3.35	8.876			
		2	2.7	0.23	3.35	4.161			
	Staircase	22	1.35	0.23	0.15	1.025			
	Entrance Steps	1	1.8	4.467	0.15	1.206			
		1	1.5	4.467	0.15	1.005			
		1	1.2	4.467	0.15	0.804			
		1	0.9	4.467	0.15	0.603			
		1	0.6	4.467	0.15	0.402			
		1	0.3	4.467	0.15	0.201			
	Rear Steps	2	1.8	2.2	0.15	1.188			
		2	1.5	2.2	0.15	0.990			
		2	1.2	2.2	0.15	0.792			
		2	0.9	2.2	0.15	0.594			
		2	0.6	2.2	0.15	0.396			
		2	0.3	2.2	0.15	0.198			
	Ramp wall	2	10.95	0.23	0.6	3.022			
	Front Gardening wall	1	14.52	0.23	0.6	2.004			
	Parapet wall	1	98.5	0.23	1.0	22.655			
	Demonstration - 1	1	9.6	0.23	0.75	1.656			
	Demonstration - 2	1	9.6	0.23	0.75	1.656			

"Civil works relating to construction of Display-cum-demonstration centre at Malliakarai, Salem"  
-Tender Ref. TNHDC/241/DC/22-23

	Display Platform	3	8.2	0.23	0.75	4.244			
	Kadapah Cupboard Ledge walls for Display cum Demo room	20	0.45	0.23	2.1	4.347			
	Kadapah Cupboard Ledge walls for Stall 1	8	0.45	0.23	2.1	1.739			
	Kadapah Cupboard Ledge walls for Stall 2	8	0.45	0.23	2.1	1.739			
	Kadapah Cupboard Ledge walls for Stall 3	8	0.45	0.23	2.1	1.739			
	Kitchen Counter Platfrom Support walls	6	0.6	0.23	0.80	0.662			
	Serving area	3	0.6	0.23	0.8	0.331			
	Corridor Seating Support walls	12	0.45	0.23	0.75	0.932			
	<b><u>Deductions</u></b>								
	D1	-1	1.50	0.23	2.10	-0.725			
	D2	-7	0.90	0.23	2.10	-3.043			
	W1	-1	4.42	0.23	1.20	-1.220			
	W2	-1	1.20	0.23	1.20	-0.331			
	W3	-1	1.80	0.23	1.20	-0.497			
	W4	-1	0.90	0.23	1.20	-0.248			
	RS	-3	2.00	0.23	2.10	-2.898			
	V1	-2	1.00	0.23	1.00	-0.460			
	V2	-4	0.60	0.23	0.45	-0.248			
	<b>Total Qty</b>					<b>237.00</b>	Cum		
<b>10</b>	Providing and constructing Brickwork of 115 mm and above thickness using well burnt first quality bricks in cement mortar 1:5 including scaffolding, curing, simultaneous pointing wherever required below ground level and raking out joints above ground level complete as per specifications and drawings In foundation and basement upto plinth including steps and In superstructure above plinth at all elevations.								
	Partition wall (Servicing area & Store)	1	3.73		3.350	12.496			
	Partition wall between Ladies and Gents Toilet	1	7.00		3.350	23.450			
	Toilet Partition wall	1	13.50		2.100	28.350			

	Deduction Door D2	-5	0.75		2.10	-7.875			
	<b>Total Qty</b>					<b>57.00</b>	Sqm		
	<b>Ceiling Plastering</b>								
11	Providing plastering to Ceiling of 10 to 12mm thick with cement mortar 1:3 including hacking, scraping, cleaning the surface, rounding of corners wherever required/specified, curing and including cost of materials, labour, all lead and lift, loading and unloading, transportation, scaffolding and all other incidental charges etc. complete in all floors. The work shall be carried out as per the directions of the Engineer In charge.								
	Display Cum Demonstration Hall	1	12.39	6.13		75.94			
	Corridor	1	21.95	3.00		65.85			
	Stall1,2&3	3	6.93	2.93		60.91			
	Cafeteria	1	7.23	6.93		50.10			
	Kitchen. Store & Serving area	1	6.93	5.00		34.65			
	Toilet area	1	10.38	4.33		44.95			
	Staircase	1	5.76	2.70		15.55			
	<b>Headroom</b>	<b>1</b>	<b>5.99</b>	<b>2.93</b>		<b>17.55</b>			
	<b>Total Qty</b>					<b>365.51</b>	Sqm		
	<b>Internal plastering</b>								
12	Providing internal plastering to masonry walls, columns, beams, jambs etc, 12 to 15mm thick in cement mortar 1:4,with proper hacking to RCC surface ,to line and level at all levels ,including fixing of mesh wherever necessary, curing etc., complete. The work shall include cost of materials, labour, all lead and lift, loading and unloading, transportation, scaffolding and all other incidental charges etc., complete. The work shall be carried out as per the directions of the Engineer In charge.								

"Civil works relating to construction of Display-cum-demonstration centre at Malliakarai, Salem"  
-Tender Ref. TNHDC/241/DC/22-23

Display Cum Demonstration Hall	2	18.52		3.35	124.08			
Corridor	2	27.41		3.35	183.65			
Stall1,2&3	6	9.86		3.35	198.19			
Cafeteria	2	14.16		3.35	94.87			
Kitchen. Store & Serving area	2	11.93		3.35	79.93			
Gents Toilet	2	9.20		3.35	61.64			
Ladies Toilet	2	9.20		3.35	61.64			
Toilet Partition walls	2	6.30		2.10	26.46			
	2	2.20		3.35	14.74			
Toilet Lobby	2	7.80		3.35	52.26			
Staircase	2	8.46		3.35	56.68			
Headroom	2	8.46		3.35	56.68			
Demonstration - 1	1	9.6		0.75	7.20			
Demonstration - 2	1	9.6		0.75	7.20			
Display Platform	3	8.2		0.75	18.45			
Kadapah Cupboard Ledge walls for Display cum Demo room	40	0.45		2.1	37.80			
	20	0.25		2.1	10.50			
Kadapah Cupboard Ledge walls for Stall 1	16	0.45		2.1	15.12			
	8	0.25		2.1	4.20			
Kadapah Cupboard Ledge walls for Stall 2	16	0.45		2.1	15.12			
	8	0.25		2.1	4.20			
Kadapah Cupboard Ledge walls for Stall 3	16	0.45		2.1	15.12			
	8	0.25		2.1	4.20			
Kitchen Counter Platfrom Support walls	12	0.6		0.80	5.76			
	6	0.25		0.80	1.20			
Serving area	6	0.6		0.80	2.88			
	3	0.25		0.80	0.60			
<b>Jams</b>								
D1	1	5.70	0.23		1.31			
D2	7	5.10	0.23		8.21			

"Civil works relating to construction of Display-cum-demonstration centre at Malliakarai, Salem"  
-Tender Ref. TNHDC/241/DC/22-23

	W1	1	11.24	0.23		2.59			
	W2	1	4.80	0.23		1.10			
	W3	1	6.00	0.23		1.38			
	W4	1	4.20	0.23		0.97			
	RS	3	6.20	0.23		4.28			
	V1	2	4.00	0.23		1.84			
	V2	4	2.10	0.23		1.93			
	<b>Deductions</b>								
	D1	-2	1.50		2.10	-6.300			
	D2	-14	0.90		2.10	-26.460			
	W1	-1	4.42		1.20	-5.304			
	W2	-1	1.20		1.20	-1.440			
	W3	-1	1.80		1.20	-2.160			
	W4	-1	0.90		1.20	-1.080			
	RS	-6	2.00		2.10	-25.200			
	V1	-2	1.00		1.00	-2.000			
	V2	-4	0.60		0.45	-1.080			
	<b>Total Qty</b>					<b>1113.00</b>	Sqm		
<b>13</b>	<b>External plastering</b>								
	Providing external plastering to masonry walls and RCC surfaces 15 to 20 mm thick cement plastering 1:4 cement mortar with sand faced finishing at all levels , curing, proper hacking, forming proper grooves as shown in the elevation etc,including curing , as per drawing and specifications. The work shall include cost of materials, labour, loading and unloading, transportation, scaffolding and all other incidental charges etc., complete. The work shall be carried out as per the directions of the Engineer In charge.								
	<b>Up to Basement Lvl</b>								
	External Walls alround	1	98.5		0.9	88.65			

"Civil works relating to construction of Display-cum-demonstration centre at Malliakarai, Salem"  
-Tender Ref. TNHDC/241/DC/22-23

	Above Basement Lvl to Roof Lvl	1	98.5		3.5	344.75			
	Parapet wall alround	2	98.5		1.0	197			
		1	98.5	0.25		24.625			
	Ramp Side Wall	2	10.95		0.75	16.425			
		1	10.95	0.25		2.7375			
	Rear Side Platform wall	1	2.8		0.6	1.68			
		1	5.1		0.6	3.06			
	Headroom	2	8.46		3.35	56.682			
	Staircase Steps	23	1.35		0.15	4.658			
		22	1.35	0.30		8.910			
	Entrance Steps	7	4.47		0.15	4.690			
		6	4.47	0.30		8.041			
	Rear Steps	7	2.20		0.15	2.310			
		6	2.20	0.30		3.960			
	Landing	1	2.20	1.80		3.960			
	Corridor Seating Support walls	24	0.45		0.75	8.100			
		12	0.23		0.75	2.070			
	<b><u>Deductions</u></b>								
	W1	-1	4.42		1.20	-5.304			
	W2	-1	1.20		1.20	-1.440			
	W3	-1	1.80		1.20	-2.160			
	W4	-1	0.90		1.20	-1.080			
	V1	-2	1.00		1.00	-2.000			
	V2	-4	0.60		0.45	-1.080			
	<b>Total Qty</b>					<b>770.00</b>	Sqm		

<b>14</b>	Providing and laying good Quality Ceramic floor tiles Anti-skid of size 600x600mm or more conforming to standards of SOMANY / KAJARIA / JOHNSON or approved equivalent make in all colours, shades in Floors laid over 20mm thick bed of cement mortar 1:4 (1 cement : 4 coarse sand / manufactured sand) and jointing with grey cement slurry @ 3.3Kg per sqm including pointing with white cement and matching pigment or other equivalent jointing materials, cleaning the surface ,cost including material , labour,lead lift , tools etc. all complete at all levels as per specifications and as directed by Engineer-in-Charge. (Note: 1.The sample shall be got approved by the Engineer-in-Charge before making order.)							
	Display Cum Demonstration Hall	1	12.39	6.13		75.944		
	Skirting	1	37.04		0.15	5.556		
	Corridor	1	21.95	3.00		65.850		
	Skirting	1	49.90		0.15	7.485		
	Stall1,2&3	3	6.93	2.93		60.915		
	Skirting	1	19.72		0.15	2.958		
	Cafeteria	1	7.23	6.93		50.104		
	Skirting	1	28.32		0.15	4.248		
	Kitchen. Store & Serving area	1	6.93	5.00		34.650		
	Skirting	1	23.86		0.15	3.579		
	Toilet area	1	10.38	4.33		44.945		
	Staircase	1	5.76	2.70		15.552		
	Skirting	1	16.92		0.15	2.538		
	Staircase Steps	23	1.35		0.15	4.658		
		22	1.35	0.30		8.910		
	Entrance Steps	7	4.47		0.15	4.690		
		6	4.47	0.30		8.041		
	Rear Steps	7	2.20		0.15	2.310		
		6	2.20	0.30		3.960		

"Civil works relating to construction of Display-cum-demonstration centre at Malliakarai, Salem"  
-Tender Ref. TNHDC/241/DC/22-23

	Landing	1	2.20	1.80		3.960			
	Ramp	1	10.95	1.53		16.786			
	Skirting	2	10.95		0.15	3.285			
	<b>Total Qty</b>					<b>431.00</b>	Sqm		
<b>15</b>	Providing and fixing Coloured glazed tiles Dadoing of Size 300mm X 450mm X 5 to 6mm thick best quality of approved quality, fixed with CM 1:3 or 3mm thick approved tile adhesive, the joints are finished neatly with tile grout with matching pigments, including providing and fixing PVC open corner and inner corner beads as per specification and design. The work shall include cost of materials, wastages, labour, all lead and lift at all levels, loading and unloading, transportation, curing and all other incidental charges etc., complete. The work shall be carried out as per the directions of the Engineer Incharge.								
	Ladies Toilet Walls	3	4.4		2.1	27.720			
	External Walls	1	18		2.1	37.800			
	Gents Toilet Walls	2	4.4		2.1	18.480			
	External Walls	1	20		2.1	42.000			
	Kitchen wall	1	16.4		1.5	24.600			
	<b>Total Qty</b>					<b>151.00</b>	Sqm		
<b>16</b>	Providing and applying two coats of Tractor Emulsion paint for Ceiling of approved good quality, make, Colour and Texture. Cost including applying one coat approved primer, preparing surfaces, materials, labour and filling up with approved crack filler, cleaning and making the surface dust-free, and protecting till the handing over of site to the employer all complete. The work shall be carried out as per the instruction of Engineer in charge.								
	Qty as per the Ceiling Qty					<b>366.00</b>	Sqm		

<b>17</b>	Providing and applying two coats of approved make Tractor Emulsion Paint for internal and external walls of approved quality, make, Colour and Texture. Cost including applying one coat approved primer, Two Coats of Wall Putty, Scrapping, preparing surfaces, materials, labour and filling up with approved crack filler, cleaning and making the surface dust-free, and protecting till the handing over of site to the employer all complete. The work shall be carried out as per the instruction of Engineer in charge.								
	Qty as per the Internal Plastering					1113.00			
	Qty as per the External Plastering					770.00			
	<b>Total Qty</b>					<b>1883.00</b>	Sqm		
<b>18</b>	Supplying and fixing of Teak wood frame of best quality including required materials, labour charges, loading and unloading charges, transport charges, tower bolts, heels, aldrops, locking arrangements etc., complete and as directed by the Engineer Incharge.								
	D1	1	7.20	0.13	0.10	0.094			
	D2	7	6.00	0.13	0.10	0.546			
	<b>Total Qty</b>					<b>1.00</b>	Cum		
<b>19</b>	Supplying and fixing of 32-35mm Laminated Flush Door Shutter of best quality including required materials, labour charges, loading and unloading charges, transport charges, Door locks, Hinges, Door Stopper, Door Closer & accessories etc., complete and as directed by the Engineer Incharge.								
	D1	1	1.50		2.10	3.150			
	D2	7	0.90		2.10	13.230			
	<b>Total Qty</b>					<b>17.00</b>	Sqm		

20	Supplying and fixing of 30mm WPC/FRP door with frame of best quality including required materials, labour charges, loading and unloading charges, transport charges, accessories materials etc., complete and as directed by the Engineer In charge.							
	D2 - Toilet Door - (0.75m x 2.1m)	5	0.75		2.10	8.000	Sqm	
21	Supply and fixing of 12 mm Thick Toughened Glass partition wall with Door & Door closer for Stall best quality including required materials, labour charges, loading and unloading charges, transport charges, accessories materials etc., complete and as directed by the Engineer In charge.	3	1.99		2.1	12.537	sqmt	
22	Supplying and fixing of approved good quality UPVC (Un-Plasticized Polyvinyl Chloride) Windows with special track mosquito mesh of casement type from the profile the size of outer frame 60mm x 58mm and shutter profile are reinforcement with GI/1mm 125GSM and 100% corrosion free, the profiles are multi chambered sections with wall thick of 2mm. The EPDM rubber (black colour) covered with over all the edges of frame and shutter the shutter will be provided with Espag multi power point locks and also it operates as handle. The corners and joints should be welded and cleaned. Radiations free pin headed plain or brown colour toughened glass 6mm thick should be provided to the shutter and it should not allow leakage of water even at most ranging storms and should have key lockable action, security protective hinges, strong locking systems and as per size for arresting noise and energy loss. The connecting mechanism between sash and outer frame that enables opening of the window. The window should be fixed to the wall with 100% packing with screws and silicon packing all round the frames. The UPVC window should be got approved from the Engineer before use on work.							
	W1	1	4.42		1.20	5.304		

"Civil works relating to construction of Display-cum-demonstration centre at Malliakarai, Salem"  
-Tender Ref. TNHDC/241/DC/22-23

	W2	6	1.20		1.20	8.640			
	W3	2	1.80		1.20	4.320			
	W4	2	0.90		1.20	2.160			
	V1	2	1.00		1.00	2.000			
	V2	4	0.60		0.45	1.080			
	<b>Total Qty</b>					<b>24.00</b>	Sqm		
<b>23</b>	Supply and Fabrication of Grill using 10mm / 12mm Rod including required materials, labour charges, loading and unloading charges etc., complete and as directed by the Engineer Incharge.								
	W1 - 4.42m x 1.2m	4	1.20	22.00	1.20	126.720			
	W2 - 1.2m x 1.2m	2	0.90	22.00	1.05	41.580			
	W3 - 1.8m x 1.2m	2	0.90	22.00	1.05	41.580			
	W4 - 0.9m x 1.2m	2	0.90	22.00	1.05	41.580			
	V1 - 1.0m x 1.0m	2	0.90	22.00	1.05	41.580			
	V 2- 0.6m x 0.45m	2	0.90	22.00	1.05	41.580			
	<b>Total Qty</b>					<b>335.00</b>	Kg		
<b>24</b>	Terrace water proofing one coat by ACRYLIC MODIFIED / POLYMER MODIFIED CEMENTITIOUS Chemical: The method consists of water proofing by surface method with waterproof admixture as per manufacturer's specification approved by Engineer.								
	For Terrace	1	392.85			392.85			
	Skirting	1	98.50		0.15	14.78			
	<b>Total Qty</b>					<b>408.00</b>	Sqm		

25	Providing Screed Concrete Flooring with CC 1: 1.5: 3 (one cement one and half sand & three HBGS jelly) using chips of grade 10mm and below for 25mm thickness and rubbed smooth With Grano Flooring etc., complete and as directed by the Engineer Incharge.							
	For Terrace	1	392.85		392.85			
	Skirting	1	98.50	0.15	14.78			
	<b>Total Qty</b>				<b>408.00</b>	Sqm		
26	Supplying and Laying of Cool Roof Heat Resistant Tiles of size 300mm X300mm X20mm laid over the Cement Mortar 1:4 ( One part Cement and Four parts of M. Sand ) and neatly pointed with tile Grouting as per standard specifications as directed by the Engineer Incharge.							
	For Terrace	1	392.85		392.85			
	Skirting	1	98.50	0.15	14.78			
	<b>Total Qty</b>				<b>408.00</b>	Sqm		
27	Providing Wiring with 2 x 1.5 Sqmm / 4.0 Sqmm (22/0.3) PVC insulated single core unsheathed copper conductor cable of 1100V grade in suitable PVC rigid pipe on wall and ceiling with PVC accessories and with Metallic switch box sheet including Modular switches , Sockets, Lamp holders, Ceiling roses etc., and 5A F.T. switch with painting of suitable colour with continuous earth wire connection of 1.0 sqmm Copper wire for pvc insulated single core unsheathed PVC light point / fan point (For Electronic regulator).							
	<b>Ground Floor</b>							
	Wiring for Ceiling Fan Point	26			<b>26.00</b>	Nos		
	Wiring for LED Tube light Point	55			<b>55.00</b>	Nos		
	Wiring for Toilet LED light Point	10			<b>10.00</b>	Nos		
	Wiring for Corridor LED Spot Light Point	8			<b>8.00</b>	Nos		

	Convenient 5Amps Plug Point	15				<b>15.00</b>	Nos		
	Convenient 15Amps Plug Point	11				<b>11.00</b>	Nos		
	AC Point	10				<b>10.00</b>	Nos		
	TV Point	4				<b>4.00</b>	Nos		
	Mirror Light Point	3				<b>3.00</b>	Nos		
	Exhaust Fan Point for Toilet & Kitchen	3				<b>3.00</b>	Nos		
	<b>Terrace Floor</b>								
	Wiring for LED Tube light Point	4				<b>4.00</b>	Nos		
	Convenient 5Amps Plug point	2				<b>2.00</b>	Nos		
<b>28</b>	Supply and Fixing electrical fixtures including required materials, labour charges, transport charges etc., complete and as directed by the Engineer incharge.								
	<b>Ground Floor</b>								
	48" Ceiling Fan - Crompton Riviera High Speed 48"	26				<b>26.00</b>	Nos		
	20W/22W LED Tube light	55				<b>55.00</b>	Nos		
	10W LED light	10				<b>10.00</b>	Nos		
	Corridor LED Spot Light	8				<b>8.00</b>	Nos		
	Mirror Light	3				<b>3.00</b>	Nos		
	9" Exhaust Fan	3				<b>3.00</b>	Nos		
	<b>Terrace Floor</b>								
	20W/22W LED Tube light	18				<b>18.00</b>	Nos		
	48" Ceiling Fan - Crompton Riviera High Speed 48"	20				<b>20.00</b>	Nos		
	9" Exhaust Fan	4				<b>4.00</b>	Nos		
<b>29</b>	E.B Connection Charges for Wiring work from the EB Main.	1				<b>1.00</b>	LS		
<b>30</b>	Providing 4 way Main DB (TPN 7 Segmnet metal door 8+12+12 model) With 40 to 63Amps 4Pole MCB 08Nos, 100Amps MCB 02Nos including material, labour, shifting, fixing, connection and all other charges etc., complete. The required number of best quality materials for Havells / Legrand.	1				<b>1.00</b>	Nos		

31	Supply and Erection of GI 50mm MS pipe 3meter long inclusive of digging earth pit hole of dia 300mm, Chamber and fixing the GI pipe and filling all around GI earth pipe with special chemical compound and as directed by the Engineer incharge.	3				3.00	Nos		
32	Supplying, fixing & testing of 110MM dia 6kg/sqcm PVC pipe conforming to IS 4985 of Make: supreme / Finolex / Ajay / Ashirvad on wall for roof water downtake with specials such as bends, coupling all complete as per specification and as directed by engineer incharge. The quoted rate includes 3mm thick GI bracket support on wall, U-bolts, nuts & washers all complete as directed by Engineer incharge.								
	For RWH	8	6.00			48.00	Rmt		
33	Providing Water supply Plumbing arrangements including supplying & laying of best quality UPVC Pipe of dia 32/ 25 / 20 / 15mm including neccessaary specials & water taps(parryware) fixing clamps in the wall and providing tap arrangements from the water tank to toilet area and main source to water tank.								
	25mm dia	1	150.00			150.00	Rmt		
	32mm dia	1	150.00			150.00	Rmt		
34	Providing Water supply Plumbing arrangements including supplying & laying of best quality CPVC Pipe of dia 32/ 25 / 20 / 15mm including neccessaary specials & water taps (parryware) fixing clamps in the wall and providing tap arrangements from the water tank to toilet area and main source to water tank.								
	25mm dia	1	100.00			100.00	Rmt		

<b>35</b>	Supplying, fixing & testing of 110MM dia 6kg / sqcm PVC pipe conforming to IS 4985 of Make : supreme / Finolex / Ajay / Ashirvad on wall for Sanitary Arrangements with specials such as bends, coupling all complete as per specification and as directed by engineer incharge. The quoted rate includes 3mm thick GI bracket support on wall, U-bolts, nuts & washers all complete as directed by Engineer incharge.							
	110mm dia	1	50.00			<b>50.00</b>	Rmt	
	75 mm dia	1	50.00			<b>50.00</b>	Rmt	
<b>36</b>	Providing and fixing in position approved Floor Mounted white European type water closet with close seat cover approved make including Dual flushing concealed cistern (3/6 lit) with half wall fixing bracket and CP face plate for dual flush. The quoted rate includes WC connector, tools and labours, transportation all complete as per specification and as directed by HIH Engineer incharge.	3				<b>3.00</b>	Nos	
<b>37</b>	Supplying and Fixing of Indian Water Closet of best quality with ISI for approved good quality including labour, transport and all other charges etc., complete.	2				<b>2.00</b>	Nos	
<b>38</b>	Supplying and fixing of Sintex Tank of approved quality of capacity of 2000 litres including pipe line connection etc., complete.							
	2000 Litre Capacity Sintex Tank	2				<b>2.00</b>	Nos	
<b>39</b>	Providing Sintex Tank Platform work of size 1.8 x 1.8m including required materials, brickwork, plastering etc., complete and as directed by the Engineer Incharge.	1				<b>1.00</b>	Nos	

<b>40</b>	Supplying and Fixing of SS Health Faucet for approved good quality including labour, transport and all other charges etc., complete.	2				<b>2.00</b>	Nos		
<b>41</b>	Supplying and Fixing of CP Short body bib cock / Pillar cock / Angle Cock for approved good quality including labour, transport and all other charges etc., complete.								
	Taps	10				<b>10.00</b>	Nos		
	Angle Cock	6				<b>6.00</b>	Nos		
<b>42</b>	Supplying and Fixing of SS Muti Floor Trap for the drain out of waste water from the Passage to soak pit.	5				<b>5.00</b>	Nos		
<b>43</b>	Supply and Fixing of Sanitary Fixtures including required materials, labour charges, transport charges, loading & unloading charges etc., complete and as directed by the Engineer Incharge.								
	SS Towel Ring	2				<b>2.00</b>	Nos		
	Sanitary wash holder	2				<b>2.00</b>	Nos		
	Soap tray holder	2				<b>2.00</b>	Nos		
<b>44</b>	Supply and fixing of Mirror of size 2' x 1'6" for wash basin including labour charges, transport charges etc., complete and as directed by the Engineer Incharge.	3				<b>3.00</b>	Nos		
<b>45</b>	Supplying and fixing vitreous china wash basin Size - 0.45m x 0.30m with CI/ MS brackets, 15mm CP brass pillar taps, 32mm CP brass waste of standard pattern, 15mm PVC inlet connections and 15mm CP angle valve including painting of fittings and brackets, cutting and making good the walls wherever required.	3				<b>3.00</b>	Nos		

46	Manufacturing, Supplying and Fixing of Stainless Steel Hand rails using 50mm dia 304L Grade Stainless Steel pipe of 1.60mm thick will be provided with tubular supports made of 304L Grade Stainless Steel pipe of 25mm dia of 1.60mm thick welded to the railing. The supports will be grouted into the wall and provided with 93.00mm thick Stainless Steel circular base plate of 304 Grade. The rate shall included for grouting into concrete with necessary supporting arrangements the hand rail in floor polishing buffing, bonding, cutting, grinding, conveyance, welding charges, electrical charges, etc. complete.							
	Entrance Steps - 1.0m Ht	2	1.80			3.60		
	Rear Steps - 1.0m Ht	2	1.80			3.60		
	Landing	1	1.80			1.80		
	Staircase Steps - 1.0m Ht	2	4.00			8.00		
	Ramp - 1.0m Ht	2	10.95			21.90		
	<b>Total Qty</b>					<b>39.00</b>	Rmt	
	Corridor Seater - 0.3m Ht	1	14.52			14.52		
	<b>Total Qty</b>					<b>15.00</b>	Rmt	
47	Providing Gully Chamber of size 0.30x0.30m including required materials, block work, plastering, pcc, earthwork, M-sand filling, cover slab etc., complete and as directed by the Engineer Incharge.	4				<b>4.00</b>	Nos	
48	Providing Inspection Chamber of size 0.45x0.45m including required materials, block work, plastering, pcc, earthwork, M-sand filling, cover slab etc., complete and as directed by the Engineer Incharge.	6				<b>6.00</b>	Nos	

49	Providing Special Band Plastering with Grooves for beautiful elevation with cement mortar 1:3 (One of cement and three of sand) 10mm thick and finished with neat cement including hacking the areas, providing band cornice, scaffolding, coping, curing etc., complete and as directed by the Engineer Incharge.								
	Band Plastering and Grooves	1				1.00	Ls		
50	Providing RWH including RCC rings, brickjelly, required materials, labour charges etc., complete and as directed by the Engineer Incharge.	2				2.00	Nos		
51	Supplying and fixing of good quality 30mm thick Kadapah Slab for Counter slab including materials, cutting, nosing, transport and all other charges etc., complete.								
	Kadapah Cupboard Ledge walls for Display cum Demo room	6	32	0.45		86.400			
	Kadapah Cupboard Ledge walls for Stall 1	12	6.96	0.45		37.584			
	Kadapah Cupboard Ledge walls for Stall 2	12	6.96	0.45		37.584			
	Kadapah Cupboard Ledge walls for Stall 3	12	6.96	0.45		37.584			
	<b>Total Qty</b>					<b>200.00</b>	Sqm		
52	Applying of Anti Termite Chemical for the Foundation and Basement to avoid the Attack of Termites in the Future including cost and conveyance of all materials to site and labour charges etc., complete.								
	Plinth area	1	392.00			392.00			
	<b>Total Qty</b>					<b>392.00</b>	Sqm		
53	Supply and Fixing of best quality Galaxy Granite of 25mm tk including required materials, labour charges, nosing, cutting charges, transport and all other charges etc., complete and as directed by the Engineer Incharge.								
	Demonstration - 1	1	2.5	2.5		6.250			
	Demonstration - 2	1	2.5	2.5		6.250			

"Civil works relating to construction of Display-cum-demonstration centre at Malliakarai, Salem"  
-Tender Ref. TNHDC/241/DC/22-23

	Display Platform	3	3.4	0.9		9.180			
	Kitchen Counter Platform	1	7.3	0.6		4.380			
	Serving area	1	3.5	0.6		2.100			
	Corridor Seating Support walls	1	20.75	0.45		9.338			
	<b>Total Qty</b>					<b>38.00</b>	Sqm		
<b>54</b>	Supply and Fabrication of MS Rolling Shutter 18 Gauge for Stalls including required materials, labour charges, loading and unloading charges etc., complete and as directed by the Engineer Incharge.								
	Stall 1	1	2.00		2.58	5.160			
	Stall 2	1	2.00		2.58	5.160			
	Stall 3	1	2.00		2.58	5.160			
	<b>Total Qty</b>					<b>16.00</b>	Sqm		
<b>55</b>	Supply and Fixing of Free Standing Wooden Columns in the Corridor including required materials, labour charges, loading and unloading charges etc., complete and as directed by the Engineer Incharge.	10				<b>10.00</b>	Nos		
<b>56</b>	Supply and Fixing of Branding Granite Stone with Band Plastering including, Plastering, Granite fixing, Painting and other required works etc., complete and as directed by the HIH Engineer.	1				<b>1.00</b>	Ls		
<b>57</b>	Providing Car Parking area with Levelling and Finishing including required materials, labour charges, Machineries etc., complete and as directed by the Engineer Incharge.	1	478.00			<b>478.00</b>	Sqm		
	<b><u>New Septic tank - 10000 Litres Capacity</u></b>								

<b>58</b>	Earth work Excavation for foundation, footing, upto 1.2mtr depth below ground level including refilling and consolidation for the Foundations and disposing the excess earth up to a initial lead of 50mtrs, the well clear of the foundation including dressing of sides, ramming of bottom complete as per specification and drawing. The work shall be carried out as per the directions by the Engineer Incharge.							
	Septic Tank	1	4.22	2.05	2.00	17.30		
	Inlet Chamber	1	0.78	0.78	0.45	0.27		
	Outlet Chamber	1	0.78	0.78	0.96	0.58		
	Dispersion Trench	1	5.00	2.50	2.00	25.00		
	<b>Total</b>					<b>44.00</b>	Cum	
<b>59</b>	Filling in foundation and basement with clean filling M-Sand or sand (not sea sand) in layers not exceeding 20cm in depth including watering, ramming, consolidating and dressing etc., complete as directed by the Engineer incharge.							
	Septic Tank	1	4.22	2.05	0.15	1.30		
	Inlet Chamber	1	0.78	0.78	0.15	0.09		
	Outlet Chamber	1	0.78	0.78	0.15	0.09		
	<b>Total</b>					<b>2.00</b>	Cum	
<b>60</b>	Providing and placing Plain Cement Concrete of 1:4:8 (IS456 ), PCC using River sand and 40mm down size aggregates including shuttering if required, proper compaction, curing, finishing, roughening to surfaces wherever required etc. as per specification. The rate shall include de watering if necessary. The work shall be carried out as per the directions of the Engineer Incharge.							
	Septic Tank	1	4.22	2.05	0.15	1.30		
	Inlet Chamber	1	0.78	0.78	0.15	0.09		
	Outlet Chamber	1	0.78	0.78	0.15	0.09		
	<b>Total</b>					<b>2.00</b>	Cum	

<b>61</b>	Providing and constructing brick masonry of 230mm and above thickness using well burnt first quality bricks in cement mortar 1:5 including scaffolding, curing, simultaneous pointing wherever required below ground level and raking out joints above ground level complete as per specifications and drawings In foundation and basement upto plinth including steps and In superstructure above plinth at all elevations.								
	<b>For 340mm Wall Thk:-</b>								
	Allround Wall	1	11.54	0.34	1.00	3.92			
	<b>For 230mm Wall Thk:-</b>								
	Allround Wall	1	11.54	0.23	1.00	2.65			
	Baffle wall	1	1.85	0.23	1.70	0.72			
	Baffle wall	1	1.85	0.23	2.25	0.96			
	Inlet Chamber Wall Allround	1	1.81	0.23	0.45	0.19			
	Outlet Chamber Wall Allround	1	1.81	0.23	0.90	0.37			
	<b>Total</b>					<b>9.00</b>	Cum		
<b>62</b>	Providing and laying cement concrete of specified grade M20 ( 1: 1.5: 3 ) (IS 456) Site mix ,using 20mm and down size granite aggregates and river sand / M sand as per the specification and design for RCC works laid as specified and well compacted vibrating, curing, finishing on exposed surface with necessary cement mortar(1:3) wherever required, the rate shall include all lead and lifts, materials, labour, equipment and machinery, loading and unloading, transportation and all other incidental charges etc., complete. The work shall be carried out as per the directions by the Engineer Incharge. (excluding cost of steel and form work charges).								
	Septic Tank Cover Slab	1	3.92	2.31	0.127	1.15			
	Beam for resting the Baffle wall	1	1.85	0.23	0.30	0.13			
	<b>Total</b>					<b>2.00</b>	Cum		

<b>63</b>	Providing, fabricating and erecting Reinforcement Steel of high yield strength torsteel bars of various diameters and Fe 500 grade for reinforced concrete work. The work includes straightening, cutting, bending, lapping, hooking, welding and placing in position, tying with double strand 18 gauge annealed binding wire and anchoring with adjoining members wherever necessary including all laps, pins & chairs etc. Complete as per design ,drawing and specification. The rate also includes cost of labor, binding wire, all necessary materials, equipment and machinery, all lead and lift at all levels, loading and unloading, transportation and all other incidental charges, etc, complete. The work shall be carried out as per the directions by the Engineer Incharge.			Kg/Cum					
	Cover Slab and Baffle Beam	1	<b>2.00</b>		120.00	240.00			
	<b>Total</b>					<b>240.00</b>	Kg		
<b>64</b>	Providing, form work of centering and shuttering at all levels and places wherever needed / specified as per drawing, including deshuttering with Steel and 12mm thick film coated Ply board if required and with adjustable steel props to full height without joints and with sufficient bracing. Cost to include sealing the joints with heavy duty brown self-adhesive tape, aligning to line and levels including providing M.S. Ties, PVC or CC cover blocks etc.,complete. The work shall be carried out as per the directions of the Engineer Incharge of the work .								
	Septic Tank Cover Slab Bottom	1	3.92	2.08		8.15			
	Septic Tank Cover Slab Sides	1	12.00		0.127	1.52			
	Baffle wall Beam Bottom	1	1.85	0.23		0.43			
	Baffle wall Beam Sides	2	1.85		0.23	0.85			
	<b>Total</b>					<b>11.00</b>	Sqm		

<b>65</b>	Providing Internal & External wall plastering to masonry walls, columns, beams, jambs etc, 12 to 15mm thick in cement mortar 1:4, with proper hacking to RCC surface, to line and level at all levels, including fixing of mesh wherever necessary, curing etc., complete. The work shall include cost of materials, labour, all lead and lift, loading and unloading, transportation, scaffolding and all other incidental charges etc., complete. The work shall be carried out as per the directions of the Engineer Incharge.							
	Inner Wall	2	3.46		2.15	14.88		
	Inner Wall	2	1.85		2.15	7.96		
	Ceiling	1	3.46	1.85		6.40		
	Baffle wall	2	1.85		1.85	6.85		
	Baffle wall	2	1.85		1.85	6.85		
	Partition Wall Top	2	1.85	0.23		0.85		
	<b>Total</b>					<b>44.00</b>	Sqm	
<b>66</b>	Finishing the top of floor with Granolithic Finish with CC 1: 1.5: 3 (one cement one and half sand & three HBGS jelly) using chips of grade 10 mm and below for 25mm thickness and rubbed smooth etc., complete. as directed by the departmental officers.							
	Septic Tank Flooring	1	3.46	1.85		<b>7.00</b>	Sqm	
<b>67</b>	Supply and fixing of FRP Manhole size of 2' x 2' including required materials, labour charges, loading & unloading charges etc., complete and as directed by the Engineer Incharge.							
	For Septic Tank	4				<b>4.00</b>	Nos	
<b>68</b>	Construction of Inspection Chamber of Size 0.45m x 0.45m including required materials, earthwork, pcc, M.sand filling, brick work, plastering, labour charges etc., complete and as directed by the Engineer Incharge.							
	Chamber	2				<b>2.00</b>	Nos	

69	Providing Plumbing Arrangements 75mm PVC Pipe, 110mm PVC Pipe, Perforated PVC Pipe including required materials, Specials, labour charges, transport charges, loading & unloading charges etc., complete and as directed by the Engineer Incharge.	1				1.00	Ls		
70	Providing Dispersion Trench arrangements including required materials, labour charges, required pebbles, brick jelly, filling materials etc., complete., and as directed by Engineer incharge.								
	Dispersion Trench	1				1.00	Ls		
	<b><u>Construction of Children's Play Park with Outdoor Play Equipments.</u></b>								
71	Earth work excavation for foundation, footing, retaining wall upto 1.50mtr depth below ground level including disposing the earth up to a initial lead of 50mtrs, the well clear of the foundation including dressing of sides, ramming of bottom complete as per specification and drawing. The work shall be carried out as per the directions by the Engineer Incharge.								
	Play Park Dwarf Wall Allround	1	73.00	0.45	0.45	14.78			
	<b>Total</b>					<b>15.00</b>	Cum		
72	Filling in foundation and basement with clean filling M-Sand or River sand (not sea sand) in layers not exceeding 20cm in depth including watering, ramming, consolidating and dressing etc., complete as directed by the Engineer incharge.								
	Play Park Dwarf Wall Allround	1	73.00	0.45	0.10	3.29			
	Play area	1	326.00		0.15	48.90			
	<b>Total</b>					<b>53.00</b>	Cum		

<b>73</b>	Providing and placing <b>Plain Cement Concrete of 1:4:8</b> (IS456 ), PCC using River sand and 40mm down size aggregates including shuttering if required, proper compaction, curing, finishing, roughening to surfaces wherever required etc. as per specification. The rate shall include de-watering if necessary. The work shall be carried out as per the directions of the Engineer Incharge.							
	Play Park Dwarf Wall Allround	1	73.00	0.45	0.10	3.29		
	<b>Total</b>					<b>4.00</b>	Cum	
<b>74</b>	Providing and constructing Brickwork of 230 mm and above thickness using well burnt first quality bricks in cement mortar 1:5 including scaffolding, curing, simultaneous pointing wherever required below ground level and raking out joints above ground level complete as per specifications and drawings In foundation and basement upto plinth including steps and In superstructure above plinth at all elevations.							
	Play Park Dwarf Wall Allround	1	73.00	0.23	0.45	<b>8.00</b>	Sqm	
<b>75</b>	Providing Internal & External Wall plastering to masonry walls, columns, beams, jambs etc, 12mm thick in cement mortar 1:5, with proper hacking to RCC surface , lime rendering finishing to line and level at all levels ,including curing etc., complete. The work shall include cost of materials, labour, all lead and lift, loading and unloading, transportation, scaffolding and all other incidental charges etc., complete. The work shall be carried out as per the directions of the HH Engineer Incharge.							
	Play Park Dwarf Wall Allround	1	73.00		0.45	32.85		
	Play Park Dwarf Wall Allround	1	73.00	0.23		16.79		
	<b>Total</b>					<b>50.00</b>	Sqm	

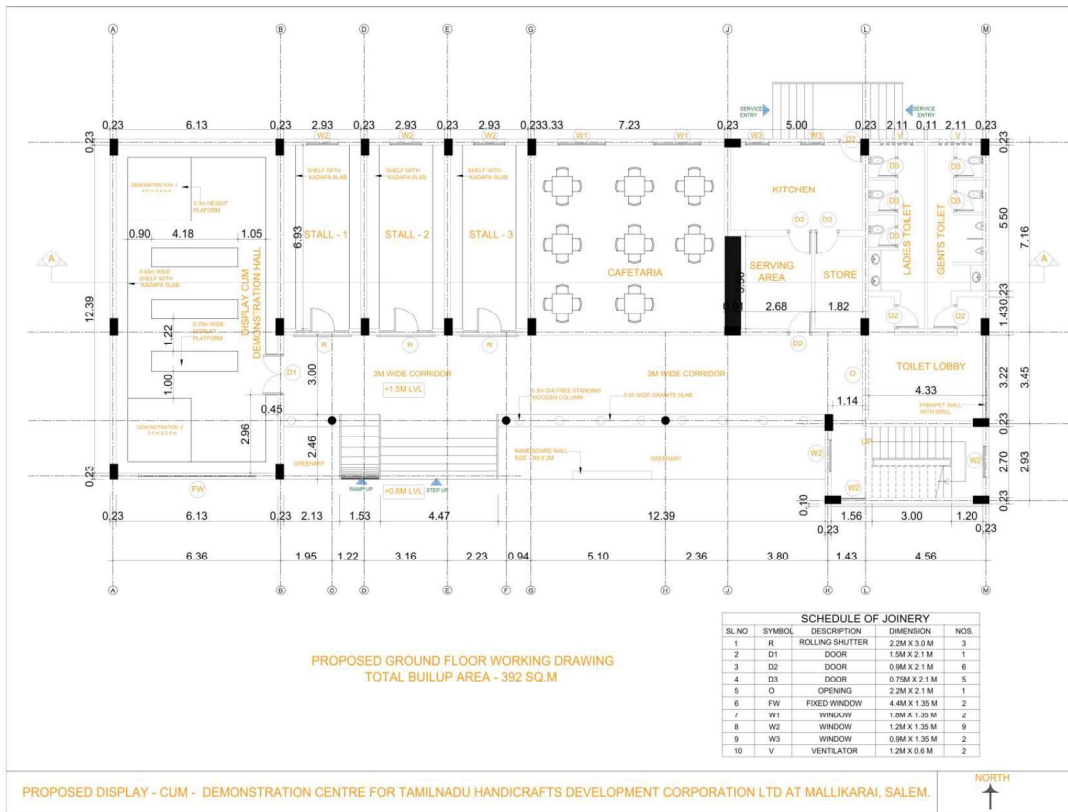
76	Providing and applying two coats of approved make Tractor Emulsion Paint for Internal & External walls of approved quality, make, Colour and Texture. Cost including applying one coat approved primer, Two Coats of Wall Putty, Scrapping, preparing surfaces, materials, labour and filling up with approved crack filler, cleaning and making the surface dust-free, and protecting till the handing over of site to the employer all complete. The work shall be carried out as per the instruction of Engineer incharge.							
	Plastering Qty					50.00	Sqm	
77	Supplying and Erection of Outdoor Play Equipments including Transport, Labour and all other charges etc., complete.							
	See Saw 04 Seater	2				2.00	Nos	
	Slide FRP	2				2.00	Nos	
	Swing 2 seater Junior	2				2.00	Nos	
	Merry go round 6 seater	1				1.00	Nos	
	<b><u>Providing Borewell 450 Feet depth with Electrical and Plumbing Arrangements</u></b>							
78	10" inch dia Drilling 0 to 80 feet labour Charges	1	80.00			80.00	Feet	
79	7" inch dia Drilling 60 to 200 feet labour Charges	1	170.00			170.00	Feet	
80	7" inch dia Drilling 201 to 300 feet labour Charges	1	120.00			120.00	Feet	
81	7" inch dia Drilling 301 to 350 feet labour Charges	1	80.00			80.00	Feet	
82	8" dia 6kg/cm2 Supreme / prince/ Finolex ISI PVC Pipe	1	80.00			80.00	Feet	
83	6" dia 6Kg/cm2 Supreme / prince/ Finolex ISI PVC slotted Pipe	1	280.00			280.00	Feet	
84	6" dia 6Kg/cm2 Supreme / prince/ Finolex ISI PVC Plain Pipe	1	90.00			90.00	Feet	
85	HR Rig Labour Beta, Conveyance Charge and Solution & Screw	1				1.00	LS	
86	Supply and fixing of 1.5HP kirloskar / Texmo / CRI higher multi stage submersible motor with starter	1				1.00	Nos	
87	4 sqmm water proof flat cable Make: VIP / Uniflex	1	225.00			225.00	Mtr	

"Civil works relating to construction of Display-cum-demonstration centre at Malliakarai, Salem"  
-Tender Ref. TNHDC/241/DC/22-23

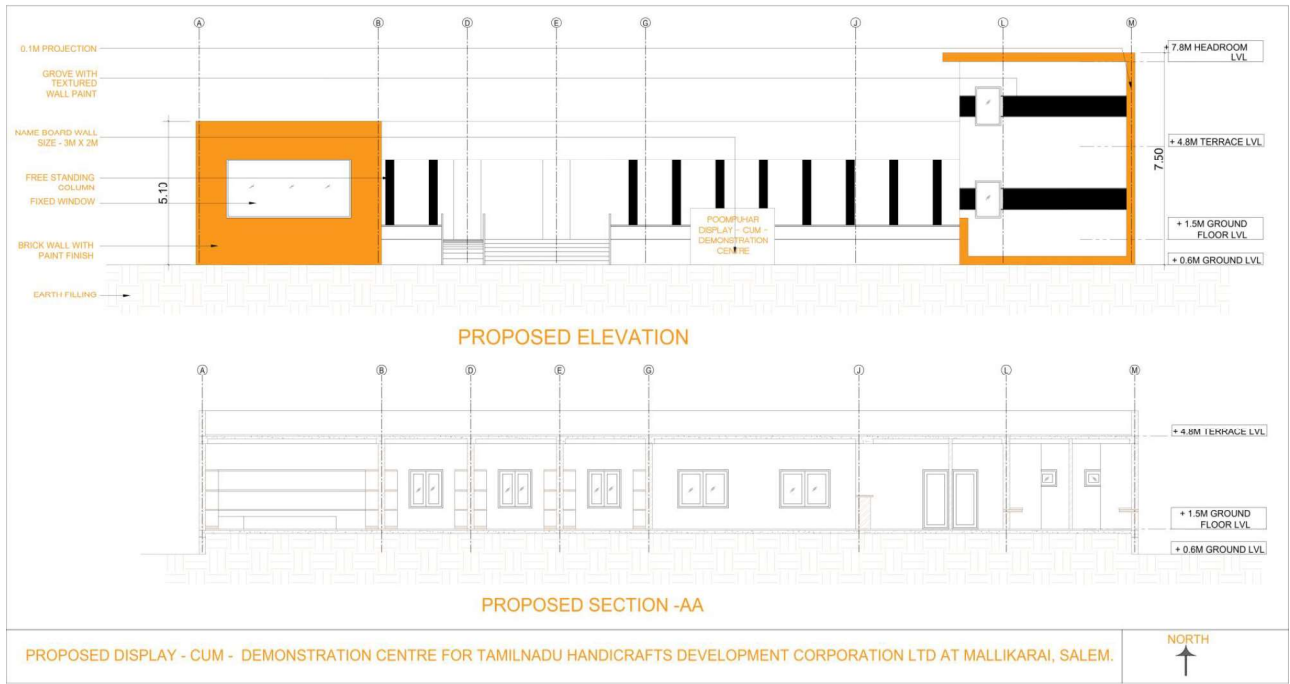
88	PVC Rope -12 mm	1	225.00			225.00	Mtr		
89	1 1/4" Column UPVC Pipe Make (Finolex, Supreme, ashirvad)	1	42.00			42.00	Length		
90	Pump Fixing Labour	1				1.00	LS		
91	Check Valve, MS Cover plate, MS Bracket, Reducer, adopter etc., complete.	1				1.00	LS		
92	For Electrical PVC Pipe-25 mm dia Heavy thick	1	60.00			60.00	Rmt		
93	Electrical Board with MCB Controller	1				1.00	Nos		
94	Geophysical Test	1				1.00	Nos		
95	Transport charges	1				1.00	Ls		
96	Bore Point to School Building Sump Water Pipe Line fixing work. 1 1/4" PVC 15 Kg (Finolex, Supreme, ashirvad) - Approximate	1	80.00			80.00	Mtr		
97	Earth Work Excavation for Water Pipeline	1	50.00	0.45	0.45	11.00	Cum		
98	Plumbing & Electrical labour charges	1				1.00	Ls		
99	Supply and laying of 80 mm Thick Paver block with sand filling around the Building as directed by Engineers					564	Sqm		
	<b>Sub total</b>								-
	<b>GST @ 18%</b>								-
	<b>Grand Total</b>								-



"Civil works relating to construction of Display-cum-demonstration centre at Mallikarai, Salem"  
-Tender Ref. TNHDC/241/DC/22-23



"Civil works relating to construction of Display-cum-demonstration centre at Mallikarai, Salem"  
 -Tender Ref. TNHDC/241/DC/22-23



"Civil works relating to construction of Display-cum-demonstration centre at Malliakarai, Salem"  
-Tender Ref. TNHDC/241/DC/22-23

---

**PRESPECTIVE VIEW OF PROPOSED DISPLAY – CUM – DEMONSTRATION CENTRE FOR TAMIL NADU HANDICRAFTS DEVELOPMENT  
CORPORTATION LTD AT MALLIAKARAI, SALEM DISTRICT**



"Civil works relating to construction of Display-cum-demonstration centre at Malliakarai, Salem"  
-Tender Ref. TNHDC/241/DC/22-23

---



"Civil works relating to construction of Display-cum-demonstration centre at Malliakarai, Salem"  
-Tender Ref. TNHDC/241/DC/22-23

---

